



Read the operating instructions prior to commissioning

# FlexFusion® GAS PLATINUM COMBI

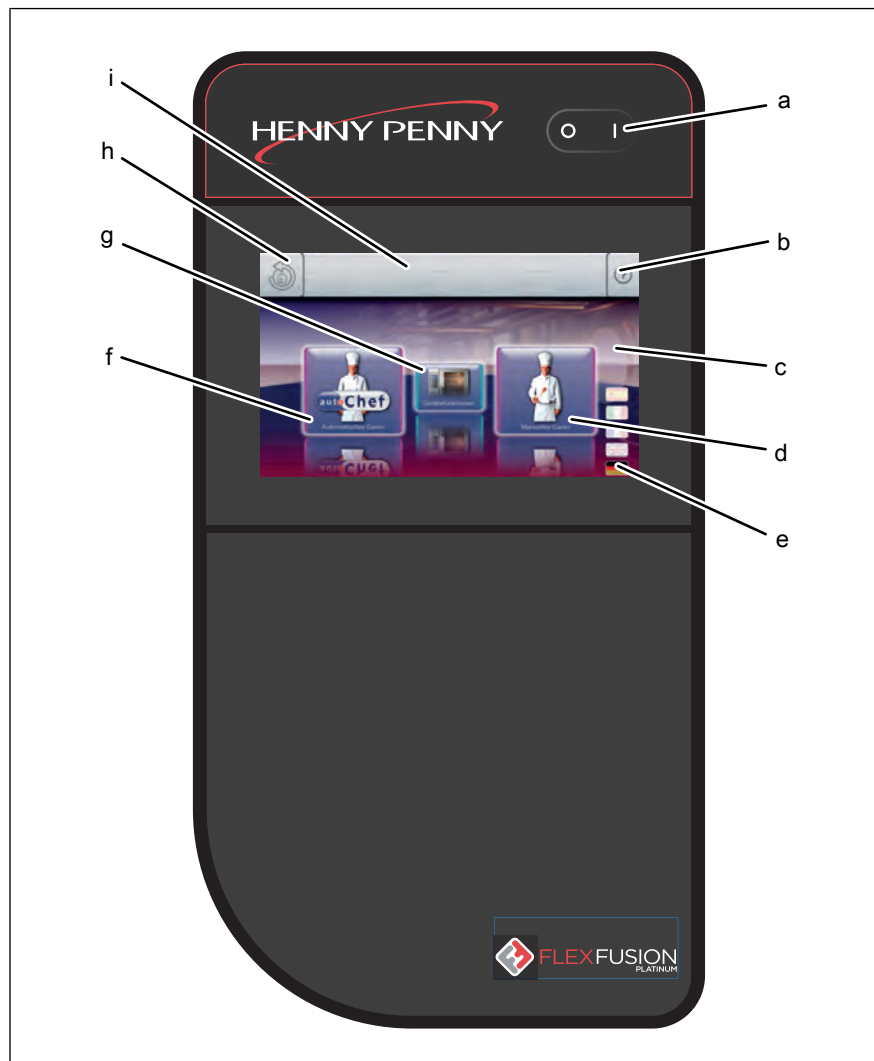


## Operating manual

### Model

FPG-615  
FPG-621  
FPG-115  
FPG-121  
FPG-215  
FPG-221

## Operating and display elements



- a *On Off* button
- b *Help* button
- c Operating element with touchscreen
- d "Manual cooking" button
- e *Language selection* button
- f "Automatic cooking" button
- g "Unit functions" button
- h *Back* button
- i Information strip



Henny Penny Corporation  
P.O.Box 60  
Eaton, OH 45320  
USA

Phone +1 937 456-8400  
Fax +1 937 456-8402

Toll free in USA  
Phone +1 937 417-8417  
Fax +1 937 417-8434

[www.hennypenny.com](http://www.hennypenny.com)



<b>1 Introduction</b> .....	<b>9</b>
<b>1.1 About this manual</b> .....	<b>9</b>
1.1.1 Explanation of signs .....	10
<b>1.2 Intended use</b> .....	<b>11</b>
<b>1.3 Warranty</b> .....	<b>11</b>
<b>2 Safety instructions</b> .....	<b>12</b>
<b>3 Rules of conduct when the smell of gas is detected</b> ....	<b>15</b>
<b>4 Description of the unit</b> .....	<b>16</b>
<b>4.1 Overview of the unit</b> .....	<b>16</b>
4.1.1 Tabletop unit .....	16
4.1.2 Pedestal unit .....	17
<b>4.2 Features</b> .....	<b>17</b>
4.2.1 Characteristics .....	17
4.2.2 Barcode Scanner .....	18
4.2.3 USB port .....	18
4.2.4 HACCP logging .....	18
4.2.5 WaveClean automatic cleaning .....	18
4.2.6 CombiDoctor (self-diagnostic program) .....	18
4.2.7 VideoAssist .....	18
4.2.8 Preheat bridge for the models FPG 215 and FPG.221.....	19
<b>4.3 Operating and cooking modes</b> .....	<b>19</b>
4.3.1 Operating modes .....	19
4.3.2 Cooking modes .....	19
4.3.3 Expanded cooking functions .....	20
4.3.4 Core temperature measurement .....	23
<b>4.4 Chef's touch unit controls</b> .....	<b>23</b>
4.4.1 Touchscreen operation .....	25
4.4.2 Operating, control and display element functions .....	26
4.4.3 Display elements .....	27
<b>4.5 Loading capacities</b> .....	<b>29</b>
4.5.1 Plate capacity during regeneration .....	29
4.5.2 Loading capacity .....	29
<b>4.6 Standard settings</b> .....	<b>29</b>
4.6.1 Core temperature standard setting .....	29
4.6.2 Temperature standard setting .....	30
<b>5 Quick introduction</b> .....	<b>31</b>
<b>6 Operating the unit</b> .....	<b>32</b>
<b>6.1 Environmentally friendly operation</b> .....	<b>32</b>
<b>6.2 Switching the unit on and off</b> .....	<b>32</b>
6.2.1 Switching on .....	32

6.2.2 Switching off .....	32
<b>6.3 Opening and closing the cooking chamber door .....</b>	<b>32</b>
6.3.1 Opening the 1-step door lock .....	33
6.3.2 Closing the 1-step door lock .....	33
6.3.3 Opening the 2-step door lock .....	33
6.3.4 Closing the 2-step door lock .....	34
<b>6.4 Loading and emptying the unit .....</b>	<b>34</b>
6.4.1 Loading and emptying .....	35
6.4.2 Loading and emptying with a tray rack trolley .....	35
6.4.3 Loading and emptying with a tray trolley .....	36
<b>6.5 Unit functions menu .....</b>	<b>37</b>
6.5.1 Opening the Unit functions menu .....	38
6.5.2 Changing the basic settings .....	38
6.5.3 Retrieving unit information .....	40
6.5.4 Setting the date and time .....	40
6.5.5 Presetting the language selection .....	41
6.5.6 Setting favorites .....	41
6.5.7 Activating and canceling inhibit operation .....	42
6.5.8 Setting the background lighting .....	43
6.5.9 Setting the water filter maintenance .....	43
6.5.10 Possible settings in the parameter level .....	44
6.5.11 Importing video .....	46
6.5.12 Importing images .....	46
6.5.13 Importing recipes .....	47
<b>6.6 Basic functions .....</b>	<b>47</b>
6.6.1 Setting the cooking temperature .....	47
6.6.2 Setting the cooking time and continuous operation .....	49
6.6.3 Setting the core temperature .....	51
6.6.4 Setting the fan speed and direction of rotation .....	52
6.6.5 Exporting the HACCP log .....	52
6.6.6 Using Perfection (regeneration) .....	53
6.6.7 Using PerfectHold .....	54
6.6.8 Ready2CookSetting .....	55
6.6.9 Using start time selection .....	56
6.6.10 Steam Exhaust System (SES) .....	57
6.6.11 RackControlUsing 2 .....	58
6.6.12 FamilyMixUsing .....	61
6.6.13 Using continue cooking .....	62
6.6.14 Setting manual steaming .....	63
6.6.15 Setting a resting step .....	64
6.6.16 QualityControlUsing .....	65
6.6.17 Using LT cooking .....	66
6.6.18 Using Delta-T cooking .....	67
6.6.19 Using the barcode scanner .....	68

- 6.6.20 Preparing a USB stick for importing and exporting ..... 68
- 6.6.21 Inserting and removing the USB stick ..... 69
- 6.7 Using the core temperature sensor ..... 69**
- 6.7.1 Measuring with a 4-point core temperature sensor ..... 70
- 6.7.2 Measuring the core temperature when cooking frozen food ..... 70
- 6.7.3 Core temperature display with time-controlled cooking process ..... 71
- 6.7.4 Core temperature display outside the cooking process ..... 71
- 6.8 Manual cooking ..... 71**
- 6.8.1 Opening the Manual cooking menu ..... 72
- 6.8.2 Creating a cooking program step ..... 72
- 6.9 Creating and managing your own cooking programs ..... 74**
- 6.9.1 Creating a cooking program ..... 74
- 6.9.2 Saving the cooking program ..... 75
- 6.9.3 Exporting a cooking program ..... 79
- 6.10 Automatic cooking (autoChef) ..... 79**
- 6.10.1 Opening the Automatic cooking menu ..... 80
- 6.10.2 Finding and opening a cooking program ..... 80
- 6.10.3 Starting the cooking program ..... 81
- 6.10.4 Ending the cooking program ..... 81
- 6.10.5 Modifying the cooking program ..... 82
- 6.10.6 Deleting a cooking program ..... 83
- 6.10.7 Exporting and importing a cooking program ..... 84
- 6.11 VideoAssist ..... 85**
- 6.11.1 Watching a video ..... 85
- 6.11.2 Deleting a video ..... 86
- 6.12 Pausing and ending operation ..... 86**
- 7 Cleaning and caring for the unit ..... 87**
- 7.1 Preventing corrosion ..... 87
- 7.2 Removing rust spots ..... 87
- 7.3 Cleaning the housing ..... 88
- 7.4 Cleaning the handle, operating elements and operating panel membrane ..... 88
- 7.5 Cleaning the touchscreen ..... 88
- 7.6 Cleaning the door seal ..... 89
- 7.7 Cleaning the cooking chamber door ..... 89
- 7.8 Cleaning the steam outlet ..... 90
- 7.9 Cleaning the condensation hood (optional) ..... 90
- 7.10 Removing calcium deposits from the unit ..... 91
- 7.11 Cleaning the cooking chamber automatically with WaveClean ..... 91
- 7.11.1 Preparing for cleaning ..... 93
- 7.11.2 Selecting the cleaning level ..... 93
- 7.11.3 Inserting the cleaning cartridge ..... 94

7.11.4 Starting automatic cleaning .....	95
7.11.5 Canceling automatic cleaning .....	95
7.11.6 Ending automatic cleaning .....	95
<b>7.12 Cleaning the cooking chamber manually .....</b>	<b>96</b>
7.12.1 Preparing the cooking chamber .....	96
7.12.2 Starting the cleaning program .....	96
7.12.3 Spraying the cleaner .....	96
7.12.4 Allowing the cleaner to act .....	96
7.12.5 Starting cleaning .....	97
7.12.6 Rinsing the cooking chamber .....	97
7.12.7 Drying the cooking chamber .....	97
<b>7.13 Swinging the air diverter open and closed .....</b>	<b>97</b>
<b>7.14 Inspecting the unit .....</b>	<b>98</b>
7.14.1 Performing a visual inspection .....	98
7.14.2 Running CombiDoctor (self-diagnostic program) .....	99
<b>8 Troubleshooting .....</b>	<b>101</b>
8.1 Emergency operation .....	101
8.2 Cause of error and remedy .....	101
8.3 Nameplate .....	101
<b>9 Disposing of unit in an environmentally responsible manner .....</b>	<b>102</b>
<b>Keyword index .....</b>	<b>103</b>





# 1 Introduction

## 1.1 About this manual

The operating instructions are part of the unit and contain information:

- on safe operation,
- on cleaning and care
- on remedial actions in case of faults.

Observe the following notes and adhere to them:

- Read the operating instructions completely before operating the unit for the first time.
- Make the operating instructions available to the operator at all times at the operating site of the unit.
- Insert any supplements from the manufacturer.
- Keep the operating instructions throughout the service life of the unit.
- Pass on the operating instructions to any subsequent operator of the unit.

**Target group** The target group of the instruction manual is the operator, who is entrusted with the operation, cleaning and care of the unit.

**Figures** All figures in this manual are intended as examples. Discrepancies can arise between this and the actual unit.

### 1.1.1 Explanation of signs

 **DANGER**

#### Imminent danger

Failure to comply will lead to death or very severe injuries.

---

 **WARNING**

#### Potential danger

Failure to comply can lead to death or very severe injuries.

---

 **CAUTION**

#### Dangerous situation

Failure to comply can lead do slight to moderately severe injuries.

---

**NOTICE**

#### Property damage

Failure to comply can cause property damage.

---

**INFORMATION**

#### Information

Notes for better understanding and operation of the unit.

---

Symbol / sign	Meaning
•	Listing of information.
→	Action steps which can be performed in any sequence.
1. 2.	Action steps which must be performed in the specified sequence.
↳	Result of an action performed or additional information relating to it.

## 1.2 Intended use

This unit is intended to be used solely for commercial purposes, particularly in commercial kitchens.

This unit may only be used with suitable accessories and for the cooking of food.

It is forbidden to use the unit for other purposes, which include the following:

- Washing dishes
- Storing supplies
- Drying cloths, paper or dishes
- Heating acids, alkaline solutions or other chemicals
- Heating preserved food
- Heating combustible liquids
- Heating rooms
- Cleaning air filters

## 1.3 Warranty

The warranty is void and safety is no longer assured in the event of:

- Improper conversion or technical modifications of the unit,
- Improper use,
- Improper startup, operation or maintenance of the unit,
- Problems resulting from failure to observe these instructions.

# 2 Safety instructions

The unit complies with applicable safety standards. Residual risks associated with operation or risks resulting from incorrect operation cannot be ruled out and are mentioned specifically in the safety instructions and warnings.

The operator must be familiar with regional regulations and observe them.

**Operation** During operation, the following group of individuals must be supervised by an individual who is responsible for safety:

- Individuals with physical, sensory, or mental handicaps, or who lack the knowledge and experience to operate the unit properly.

The supervising individual must be familiar with the unit and the risks associated with it.

**Hot surfaces Risk of burns from hot surfaces**

- Protect arms and hands by wearing suitable protective gloves.
- Allow surfaces to cool prior to cleaning.
- Remove hot utensils only with suitable protective gloves or potholders.
- Remove containers and baking sheets only with suitable protective gloves or potholders.

**Hot liquids Risk of scalding from hot liquids**

- Protect arms and hands by wearing suitable protective gloves.
- Remove, transport and empty containers carefully.

**Risk of chemical burns from evaporating cleaners**

- Follow the instructions of the cleaning agent manufacturer.
- Allow the cooking chamber to cool to a temperature below 60 °C (140°F) and then clean.

**Risk of scalding from steam**

- Protect arms and hands by wearing protective gloves.
- Do not hold hands in front of the extractor hood.
- First open the cooking chamber door slightly and allow the steam to escape. Then open the cooking chamber door completely.
- Dry unit completely after cleaning it.

**Defective unit Risk of injury from a defective unit**

- Disconnect a defective unit from the electrical supply mains.
- Defektes Gerät mit Gas-Absperrhahn von Gaszufuhr trennen.
- Do not operate a defective unit.
- Allow only qualified personnel to repair the unit.

- Escaping gas or exhaust gas** **Risk of asphyxiation and explosion from escaping gas**
- Follow the rules of conduct when the smell of gas is detected (see "Rules of conduct when the smell of gas is detected").

**Risk of asphyxiation and poisoning from exhaust gases**

- Ensure that air inlet openings are free and that a sufficient amount of the necessary combustion air is supplied.
- Ensure that the exhaust gas outlet openings are free and that the exhaust gases are discharged properly.

**Fire prevention** **Risk of fire from dirt and grease deposits**

- Clean the unit when finished using it.
- Do not use the unit as a deep fat fryer.
- Do not store any combustible objects or plastic containers in the cooking chamber.

**Risk of fire from objects**

- Do not obstruct the exhaust gas duct.

**Firefighting**

- In the event of a fire, disconnect the unit from the electrical supply mains.
- Im Brandfall Gerät mit Gas-Absperrhahn von Gaszufuhr trennen. In the event of a fire, use the gas shut-off valve to isolate the unit from the gas supply.
- Use a Fire Class F fire extinguisher, never water, to extinguish grease fires. Other fires, for instance, can be extinguished with fire extinguishers suitable for Fire Classes A, B, C, CO<sub>2</sub> fire extinguishers or extinguishing media suitable for the fire class confronted.

**Unit on casters** **Risk of injury from a unit on casters**

- Lock casters during operation.
- Only move an empty unit.

**Danger of a line breaking if subjected to high tensile load**

- Secure the unit with a chain as a strain relief for the connection line at the installation site so that no tensile load is applied to the connection line if the unit is moved.

**Improper cleaning** **Risk of chemical burns from cleaning agent**

- Follow the instructions of the cleaning agent manufacturer.
- Take appropriate protective measures when handling aggressive cleaning agents.

**Risk of falling on smooth floors**

- Keep the floor in front of the unit clean and dry.

### **Risk of injury from improper cleaning**

- Clean the cooking chamber carefully. The cooking chamber sensor protrudes into the cooking chamber.

### **Risk of property damage from improper cleaning**

- Clean the unit after using it.
- Do not clean the unit with a high-pressure cleaner.
- Do not clean the housing with highly abrasive or chemically aggressive cleaning agents.
- Do not clean the housing with highly abrasive sponges.
- Follow the instructions of the cleaning agent manufacturer.
- Do not shock the unit by cooling it abruptly.
- Clean the cooking chamber carefully. The cooking chamber sensor protrudes into the cooking chamber.
- Do not use any bleaching or chlorine-containing cleaners.
- Remove rust spots with an abrasive.
- Keep the unit free of calcium deposits.

### **Hygiene Health risk from insufficient hygiene**

- Observe applicable regional hygiene regulations.

### **Core temperature measurement Risk of injury from overheated core temperature sensor**

- Do not heat the core temperature sensor over an open flame.

### **Improper use Risk of property damage from improper use**

- Use only original accessories.
- Train operators regularly.
- Do not heat food warmer plates or cans of preserved food.
- Do not cover air inlet and outlet openings.
- Do not operate the unit at temperatures below 4° C (32°F).
- Remove the core temperature sensor before the cooked food is removed.
- Insert the core temperature sensor back into the holder after use.

## 3 Rules of conduct when the smell of gas is detected

---

 **DANGER**

**Risk of asphyxiation and explosion from escaping gas**

Rules of conduct when the smell of gas is detected.

---

- Remain calm.
- Open windows and doors and ventilate rooms.
- Avoid rooms with the smell of gas.
- Do not smoke.
- Do not ignite any flames. Extinguish flames.
- Do not create any sparks. Do not operate any switches, electrical devices or use telephones.
- Remove mobile phones and radio-controlled devices from the hazard area.
- Close gas shut-off valves at the gas meter, at the main supply and, if possible, at the units.
- Warn other individuals in the building. Call out and knock, do not ring doorbells.
- Leave the building and prevent entry by others.
- Observe the safety instructions of the gas utility.
- Once outside the building, notify the responsible parties:
  - If the smell of gas comes from the unit, notify Customer service.
  - If the source of the gas smell can not be localised immediately, notify the gas utility.
  - If the escaping gas is audible, leave the building immediately, prevent others from entering and notify the fire brigade, police and gas utility.
  - If the smell of gas comes from inaccessible rooms, notify the fire brigade, police and gas utility.

## 4 Description of the unit

### 4.1 Overview of the unit

#### 4.1.1 Tabletop unit

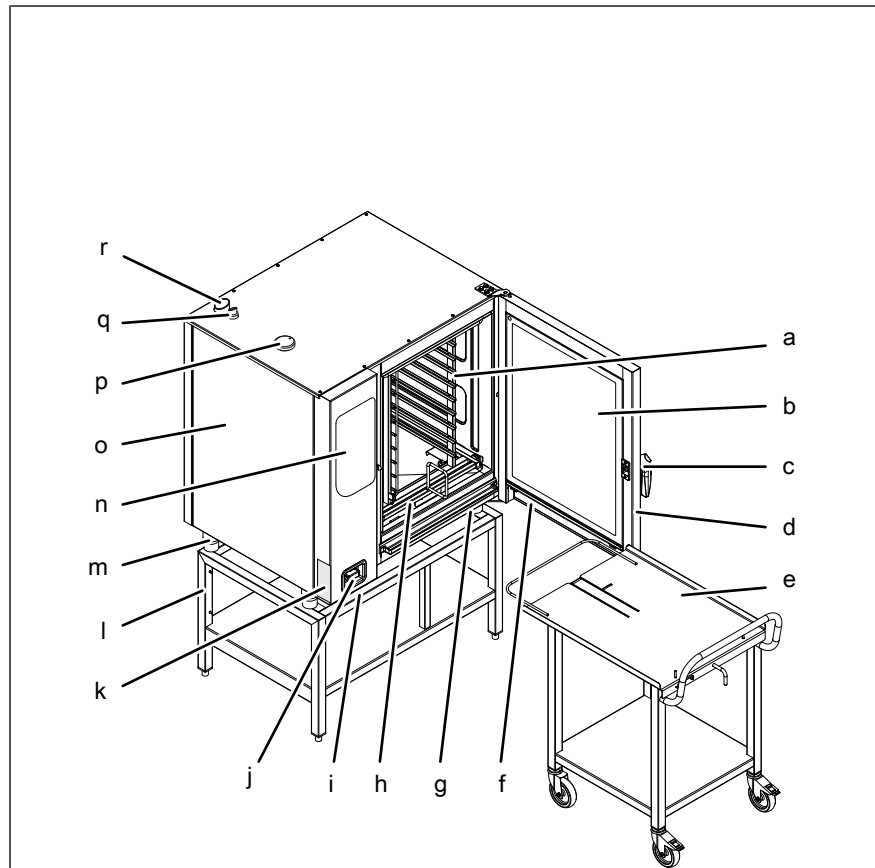


Image: Unit with tray rack trolley

- |   |                                     |   |                       |
|---|-------------------------------------|---|-----------------------|
| a | Tray rack                           | j | Hand shower           |
| b | Insulating disk                     | k | Nameplate             |
| c | Door handle                         | l | Base frame (optional) |
| d | Cooking chamber door                | m | Unit leg              |
| e | Tray rack trolley (optional)        | n | Operating unit        |
| f | Vapor drainage channel, door        | o | Housing               |
| g | Vapor drainage channel, unit        | p | Air inlet nozzle      |
| h | Guide rail for tray rack (optional) | q | Waste gas connection  |
| i | USB port (covered)                  | r | Steam outlet nozzle   |



## 4.1.2 Pedestal unit

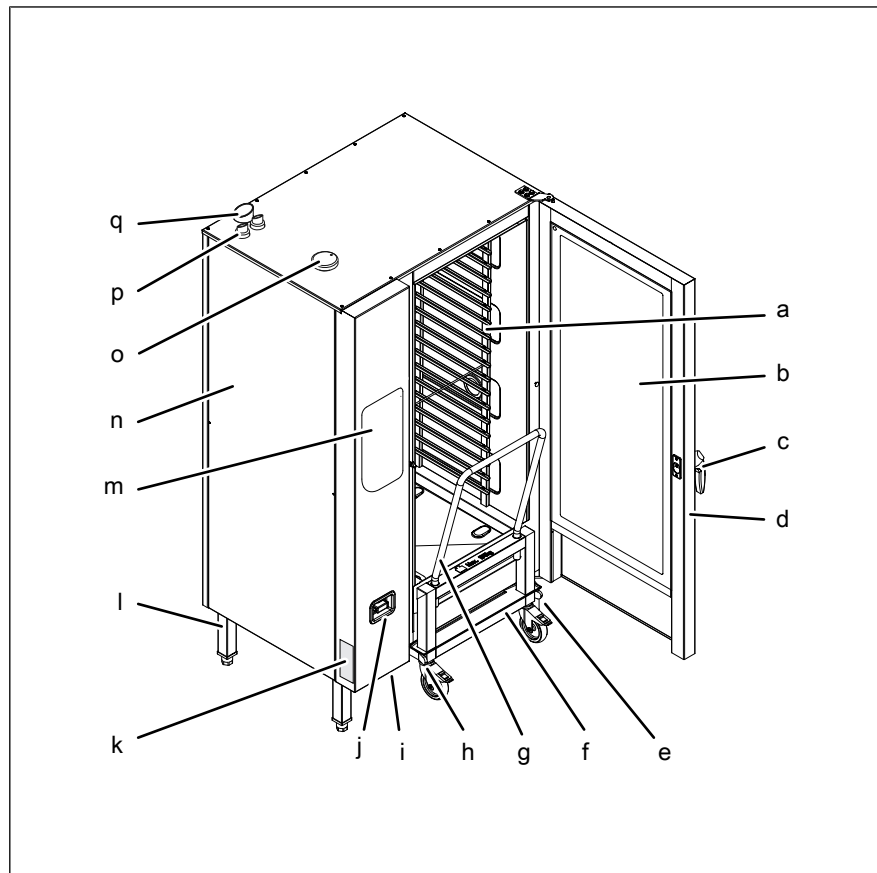


Image: Unit with tray trolley

a	Tray rack	j	Hand shower
b	Insulating disk	k	Nameplate
c	Door handle	l	Unit leg
d	Cooking chamber door	m	Operating unit
e	Guide rail (right)	n	Housing
f	Tray trolley	o	Air inlet nozzle
g	Handle bar	p	Waste gas connection
h	Guide rail (left)	q	Steam outlet nozzle
i	USB port (covered)		

## 4.2 Features

### 4.2.1 Characteristics

- 4-point core temperature sensor
- Sous-vide core temperature sensor or a second 4-point core temperature sensor (optional)
- Hand shower
- Cooking chamber door with hygienic glazing
- 1-step door lock

- Two-step door lock (optional); this feature is standard on size 20 units
- Power optimization system (optional)
- Ethernet connection (optional)
- Cooking chamber door hinged at right
- Cooking chamber door hinged at left (optional), not on size 20 floor-standing units
- WaveClean
- Barcode scanner (optional)
- Steam Exhaust System (SES)

### 4.2.2 Barcode Scanner



Use the barcode scanner to scan the barcode, for instance, on the packaging of the food to be cooked, and transfer it to the unit. The unit then searches for the appropriate cooking program. If several cooking programs are found, they are all listed.

A prerequisite for using the barcode scanner is correct connection of the barcode scanner and a cooking program with the appropriate recognition capability.

### 4.2.3 USB port

The unit is equipped with a USB port (USB 2.0).

HACCP logs can be exported via the USB port.

A wireless or corded barcode scanner (optional) can be connected to the USB port.

### 4.2.4 HACCP logging

All cooling programs run are recorded in the HACCP log.

The data are exported via the USB port.

### 4.2.5 WaveClean automatic cleaning

With WaveClean automatic cleaning, the cooking chamber is cleaned with the aid of a cleaning cartridge intended specifically for the program and then rinsed clean.

### 4.2.6 CombiDoctor (self-diagnostic program)

CombiDoctor uses a selectable self-diagnostic program to check the components used for climate control and cleaning.

### 4.2.7 VideoAssist

VideoAssist can be used to display videos with additional explanations regarding operation.

## 4.2.8 Preheat bridge for the models FPG 215 and FPG 221



Image: Preheat bridge

The preheat bridge is placed on the lower edge of the cooking chamber opening on combi-steamer models FPG 215 and FPG 221 when the cooking chamber is heating up or WaveClean is running and there is no tray trolley in the combi-steamer.

## 4.3 Operating and cooking modes

### 4.3.1 Operating modes



#### Manual cooking

In the Manual cooking mode, individual cooking modes and equipment functions can be actuated directly. The various types of cooking and equipment functions can be adapted individually.



#### Automatic cooking (autoChef)

In the Automatic cooking mode, stored cooking programs can be actuated and adapted as necessary.

### 4.3.2 Cooking modes



#### Steaming

Steaming is a cooking mode, in which the food to be cooked is cooked gently by means of steam in a temperature range of 30 °C (86 °F) to 130 °C (266 °F)..



#### Combisteaming

Combisteaming is a cooking mode in which the steaming and hot air cooking modes are combined. The temperature range extends from 30 °C (86 °F) to 250 °C (482 °F).



#### Hot air

Hot air is a cooking mode, in which the food to be cooked is cooked without additional moisture in a temperature range of 30 °C (86 °F) to 250 °C (482 °F).



### Perfection (regeneration)

Perfection is a cooking mode, in which cooled food to be cooked can be kept warm and prepared in a short time in a temperature range of 30 °C (86 °F) to 180 °C (356 °F).



### Delta-T cooking

Delta-T cooking is a cooking mode, in which the cooking temperature depends on the core temperature of the food being cooked.



The cooking temperature is always higher than the current core temperature by the set value (Delta-T value, cooking temperature difference). The resulting cooking time is longer than with other cooking modes.



Delta-T cooking is especially well-suited for general cooking. The food being cooked remains tender and juicy with little weight loss.



### Low-temperature cooking

Low-temperature cooking is a cooking mode, in which the food to be cooked is cooked particularly gently in a temperature range of 30 °C (86 °F) to 100 °C (212 °F).

The cooking time is considerably longer than at higher temperatures, but no supervision is required and the cooking time can be extended considerably without any loss in quality.

The food being cooked remains tender and juicy with little weight loss.



### Baking

Baking is a cooking mode in which the texture of the food to be cooked is loosened and then cooked and browned by hot air in a temperature range of 30 °C (86 °F) to 220 °C (428 °F). Before baking takes place, a humidifying process with its associated acting time can be performed.

### 4.3.3 Expanded cooking functions

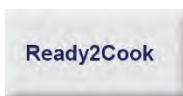
Expanded cooking functions can be used to adapt individual cooking steps to the particular food being cooked.

The following expanded cooking functions are available:



### PerfectHold

PerfectHOLD is a cooking function, in which the food to be cooked is kept warm in the unit at a temperature range of 50 °C (122 °F) to 100 °C (212 °F) after the actual cooking process, until it is ready to be served.



### Ready2Cook (preheating)

For many cooking programs such as baking, for instance, the correct starting temperature is important.

With Ready2Cook, the cooking chamber can automatically be heated or cooled to the correct starting temperature.

A screen-filling display gives information during the procedure about the status.



### Start-time selection

---

## INFORMATION

When using start time selection, temperatures that promote the growth of harmful microorganisms on the food being cooked can occur in the cooking chamber. Observe food processing regulations.

Start time selection can be used to set a waiting period until the program starts.

In this way, bottlenecks in production and preparation can be avoided.

The prepared food can be loaded into the unit and the desired cooking program selected.



### Steam Exhaust System (SES)

This function is activated by default for all cooking programs that have a cooking time longer than 6 minutes.

The Steam Exhaust System (SES) is activated automatically shortly before the end of cooking.

After the cooking time, the Steam Exhaust System (SES) extracts the steam from the cooking chamber. It is then possible to open the cooking chamber door without risk of injury.



### RackControl2

RackControl is ideal for rolling cooking.

With the extended RackControl2 cooking function, different foods such as potatoes, cauliflower, peas, carrots and meat can be cooked simultaneously for different times.

RackControl2 monitors the various cooking times in one process. When one cooking time has elapsed, a signal sounds and the food being cooked can be removed.

The set temperature can be changed during an active cooking process, without the process having to be stopped.



### ChefsHelp

With the ChefsHelp advanced cooking program, it is possible to insert a cooking step that assists the user further with Information in the form of text and images at a certain time.



### FlexiRack

With the FlexiRack advanced cooking function, it is possible to set a cooking program for each shelf individually.



### FamilyMix

With the expanded cooking function FamilyMix, the appropriate cooking programs are displayed in the *Automatic cooking (autoChef)* menu for the currently set cooking mode. The cooking programs displayed have the same cooking climate and an identical or shorter cooking time. Tapping the individual suggestions transfers the cooking times for the individual products to the RackControl function and these can then be started when desired during the cooking process.



### Manual steaming

Manual steaming allows the cooking chamber humidity to be increased during operation.

Manual steaming can only be used in the Hot air and Delta T hot air cooking modes.

The remaining time for this procedure is displayed during steaming. After the Drop symbol has been touched, the set value is displayed for 3 seconds.



### Idle time

With the idle time expanded cooking function, a cooking step can be inserted during which the heating and the fans are programmed to switch off for a certain period of time.



### QualityControl

With the expanded QualityControl cooking function, the control senses the amount loaded automatically and adjusts the individual cooking parameters in autoChef. This ensures first-class quality consistently.



### Continue cooking button

The Continue cooking button lets you continue the cooking process for a predefined period of time after the cooking program has ended.

### Time2Serve



With the Time2Serve advanced cooking function, different products are ready to be served at the same time.

The serving time is specified. The combi-steamer signals when it has reached a remaining cooking time for a product. A signal sounds and the food to be cooked is loaded successively during an active cooking process. The cooking time is shortened, conserving resources.



### ClimaSelect plus

The ClimaSelect plus advanced cooking function optimizes the atmosphere in the cooking chamber. Steam is added in small amounts; the atmosphere can be controlled individually.

#### 4.3.4 Core temperature measurement

When using core temperature measurement, the temperature inside the food being cooked is measured by means of a core temperature sensor.

As soon as the target core temperature is reached, the cooking process is ended automatically or, in the case of a multi-step cooking program, the next cooking step starts.

The use of core temperature measurement offers the following benefits:

- Reduced energy and water consumption
- No overcooking
- Less weight lost by the food being cooked
- High HACCP safety

#### 4.4 Chef's touch unit controls

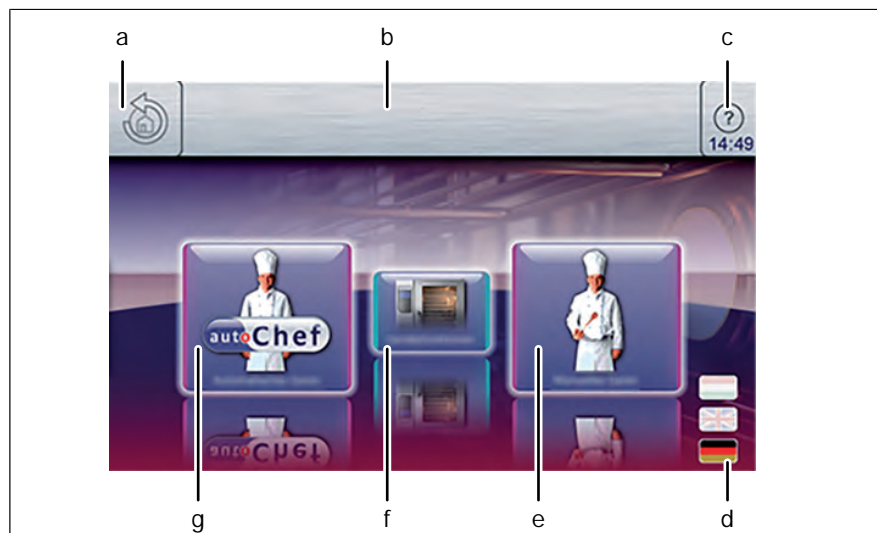


Image: Main menu

- |   |                           |   |                            |
|---|---------------------------|---|----------------------------|
| a | Back button               | e | "Manual cooking" button    |
| b | Information strip         | f | "Unit functions" button    |
| c | Help button               | g | "Automatic cooking" button |
| d | Language selection button |   |                            |

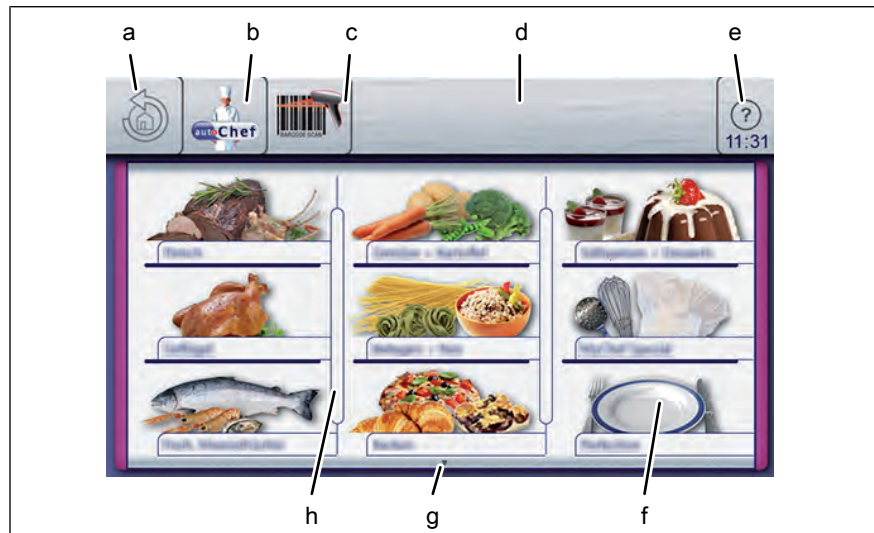


Image: Automatic cooking menu, autoChef

- |   |                        |   |                        |
|---|------------------------|---|------------------------|
| a | Back button            | e | Help button            |
| b | "autoChef" button      | f | Category field         |
| c | Barcode scanner button | g | Next page arrow symbol |
| d | Information strip      | h | Separating bar         |

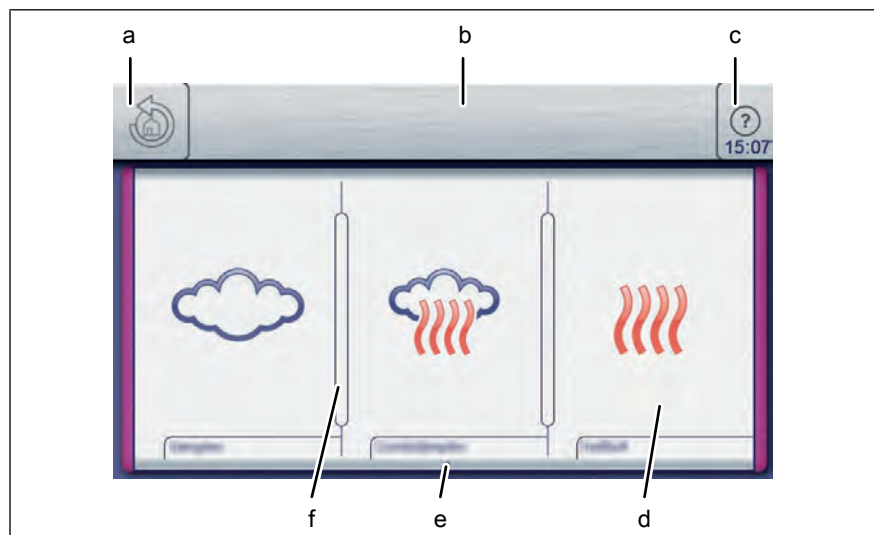


Image: Manual cooking menu

- |   |                   |   |                        |
|---|-------------------|---|------------------------|
| a | Back button       | d | "Hot air" field        |
| b | Information strip | e | Next page arrow symbol |
| c | Help button       | f | Separating bar         |



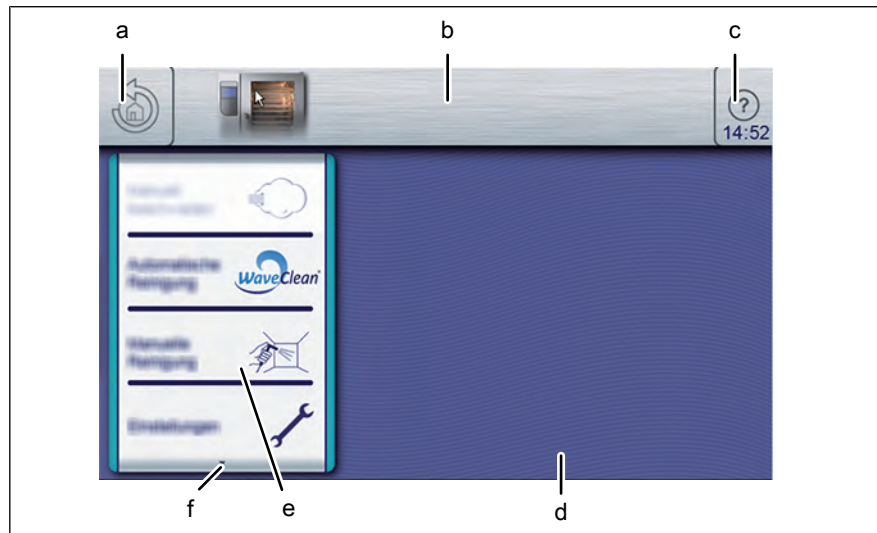


Image: Unit functions menu

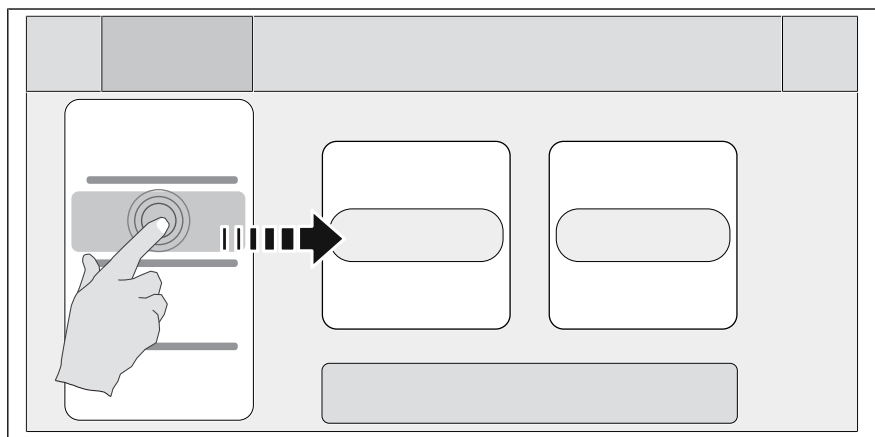
- |   |                   |   |                        |
|---|-------------------|---|------------------------|
| a | Back button       | d | Window                 |
| b | Information strip | e | Manual cleaning field  |
| c | Help button       | f | Next page arrow symbol |

#### 4.4.1 Touchscreen operation

### INFORMATION

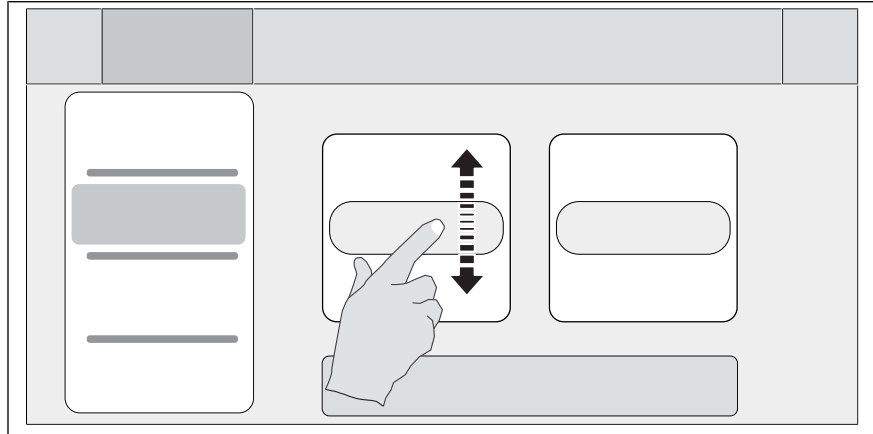
The touchscreen can be operated with latex gloves.

#### Tapping



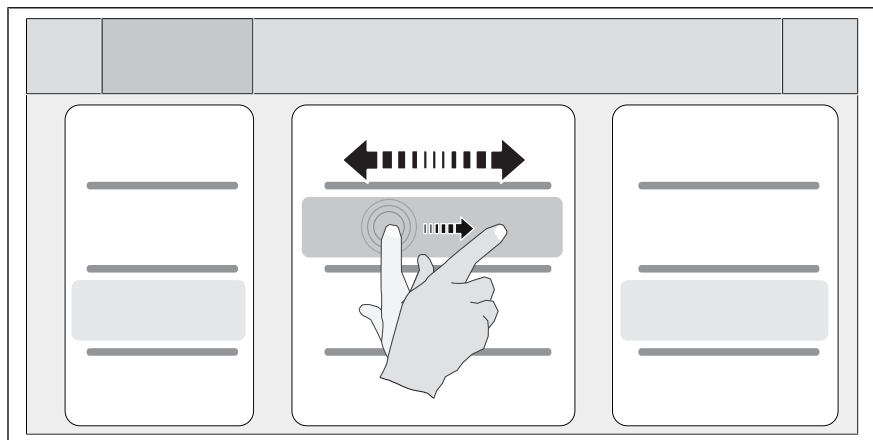
Display elements such as buttons, fields or tabs are selected or activated by tapping them. They appear to the right of the currently displayed roller.

Scrolling



The rollers are used to scroll up or down to display additional content.




Swiping



You use the swipe gesture to access fields to the right and left of the current display.




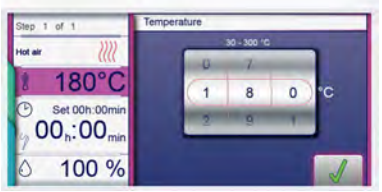
4.4.2 Operating, control and display element functions

Symbol	Operating and display element	Function
	On Off "I O" button	<ul style="list-style-type: none"> <li>"I" switches on the unit</li> <li>"O" switches off the unit</li> </ul>
	"Automatic cooking" button	<ul style="list-style-type: none"> <li>Opens the <i>Automatic cooking</i> menu for selection of programs</li> </ul>
	"Manual cooking" button	<ul style="list-style-type: none"> <li>Opens the <i>Manual cooking</i> menu for selection of the cooking modes</li> </ul>
	"Unit functions" button	<ul style="list-style-type: none"> <li>Opens the <i>Unit function</i> menu for selection of cleaning and settings</li> </ul>

Symbol	Operating and display element	Function
	<i>Language selection</i> button	<ul style="list-style-type: none"> <li>Indicates that the operating language for the unit can be selected here by tapping a country's flag</li> </ul> <p>Selection and the number of selectable languages can be specified in the <i>Unit functions</i> menu in the "Languages" settings field.</p>
	<i>Back</i> button	<ul style="list-style-type: none"> <li>Tapping once returns the user to the previous menu</li> <li>Tapping twice returns the user directly to the main menu</li> </ul>
	<i>Help</i> button	<ul style="list-style-type: none"> <li>Displays the help texts for the active menu or window.</li> </ul>

### 4.4.3 Display elements

The following table lists the basic display elements of the unit's control system with examples.

Symbol	Display element	Function
	Information strip	<p>The information strip is the uppermost bar on the touchscreen and visible at all times.</p> <p>The information strip is used to display current information, for instance, categories or cooking programs.</p>
	Menu	<p>Menus have a colored border that identifies the associated subject.</p> <ul style="list-style-type: none"> <li>Blue for unit functions</li> </ul> <p>and</p> <ul style="list-style-type: none"> <li>Violet for cooking functions.</li> </ul> <p>Menus frequently contain vertical separating bars to simplify swipe gestures.</p> <p>Menus represent central entry points and provide an overview of the selectable functions and submenus.</p>
	Page	<p>Pages are the areas with content in windows and menus. Several pages can follow one another in sequence.</p> <p>An arrow symbol displays further pages. Changing to the next or the previous page is accomplished by swiping up or down.</p>
	Window	<p>Windows have a colored border and are opened from menus or higher-level windows.</p> <p>Functions are executed and settings displayed in windows.</p> <p>Depending on the function, there are several window types, for instance, Find.</p>

FM05-118-D

## Description of the unit

Symbol	Display element	Function
	Field	Fields are areas in windows or menus defined by separating bars.  Tapping fields opens functions and settings.
	Button	Buttons are areas enclosed by borders in windows or menus.  Tapping buttons confirms settings. Buttons control functions and are used to navigate in menus and windows.
	Tab	A <i>blue</i> and a <i>green</i> tab are located on the left side of the touchscreen. The tabs are available only in the cooking step display.  Tapping the tabs offers quick access to unit functions and cooking program functions.
	Display	Displays are information-containing areas in windows.  Displays show entries and current information some of which may be operated by tapping.
	Symbol	Symbols are graphical elements in windows and in the toolbar.  Symbols indicate current states and possible functions some of which may be operated by tapping.
	Roller	Rollers are areas where settings can be made by means of swipe gestures.
	Lock	This symbol indicates that screen lock has been activated. Only the lock symbol is active.  If the operator taps on the lock symbol, a numeric keypad appears. The touchscreen is unlocked by entering a specific combination of numbers.

## 4.5 Loading capacities

### 4.5.1 Plate capacity during regeneration

Cooking time and cooking temperature depend on the number of plates.

Version	Plate diameter		
	26 cm (10,24 inch)	28 cm (11,02 inch)	32 cm (12,56 inch)
FPG-615	30	24	22
FPG-621	30	24	22
FPG-115	50	40	40
FPG-121	50	40	40
FPG-215	100	80	80
FPG-221	120	120	80
on	1/1 GN grate		Tray rack or tray trolley

### 4.5.2 Loading capacity

Tray rack trolley and tray trolley

Version	Per shelf maximum (kg (lb))	Per unit maximum (kg (lb))
FPG-615	15 (33,1)	50 (110,3)
FPG-621	15 (33,1)	50 (110,3)
FPG-115	15 (33,1)	80 (176,4)
FPG-121	15 (33,1)	80 (176,4)
FPG-215	15 (33,1)	150 (330,8)
FPG-221	15 (33,1)	150 (330,8)

## 4.6 Standard settings

### 4.6.1 Core temperature standard setting

The adjustment range for the core temperature depends on the cooking mode.

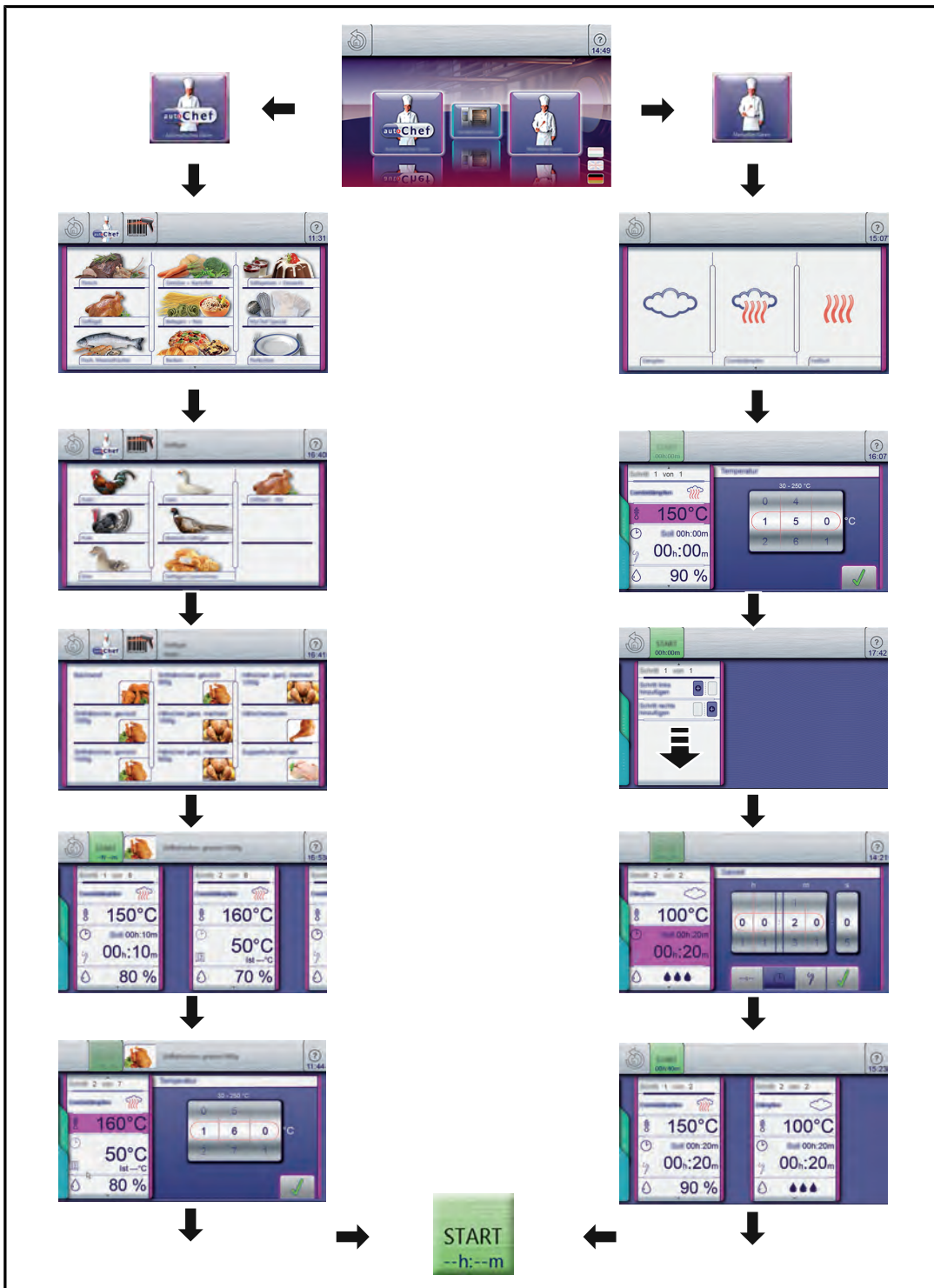
Cooking mode	Standard value (°C (°F))	Setting range (°C (°F))	Change increments (°C (°F))
Steaming	70 (158)	0 (32) - 99 (210,2)	1 (33,8)
Combisteam	70 (158)	0 (32) - 99 (210,2)	1 (33,8)
Hot air	70 (158)	0 (32) - 99 (210,2)	1 (33,8)
Regeneration	50 (122)	0 (32) - 99 (210,2)	1 (33,8)

### 4.6.2 Temperature standard setting

The setting range for the cooking zone temperature depends on the type of cooking.

Cooking mode	Standard value (°C (°F))	Setting range (°C (°F))	Change increments (°C (°F))
Steaming	100 (212 )	30 (86 ) 130 (266)-	1 (33,8 )
Combisteaming	150 (302)	30 (86 ) 250 (482)-	1 (33,8 )
Hot air	180 (356)	30 (86 ) 250 (482)-	1 (33,8 )
Regeneration	50 (122 )	30 (86 ) 180 (356)-	1 (33,8 )

# 5 Quick introduction



FM05-118-D

## 6 Operating the unit

---

### INFORMATION

Explanatory video clips can be selected under VideoAssist by press the Help button.

---

### 6.1 Environmentally friendly operation

When used properly, this combi-steamer has very low energy consumption.

Reduce the energy consumption in the following manner:

- Avoid continuous operation - the combi-steamer heats up very quickly so that continuous operation is not necessary.
- Use the full capacity of the cooking chamber - if necessary, use a combi-steamer with a smaller cooking chamber.

### 6.2 Switching the unit on and off

#### 6.2.1 Switching on

→ Press the *On Off "I O"* button to "I".

↳ The unit is now on.

↳ The control system starts the power-on process automatically. The progress bar at the lower edge of the touchscreen displays the status of the process.

↳ The main menu appears after 1 minute and the unit is ready for use.

#### 6.2.2 Switching off

### INFORMATION

Fans may continue to run for cooling; the unit's control system is disconnected from power.

---

→ Press the *On Off "I O"* button to "O".

↳ The unit is now off.

### 6.3 Opening and closing the cooking chamber door

---

### INFORMATION

The 1-step door lock is standard on sizes 6 and 10.

---

### INFORMATION

The two-step door lock is standard on size 20, and optional on sizes 6 and 10.

---



### 6.3.1 Opening the 1-step door lock

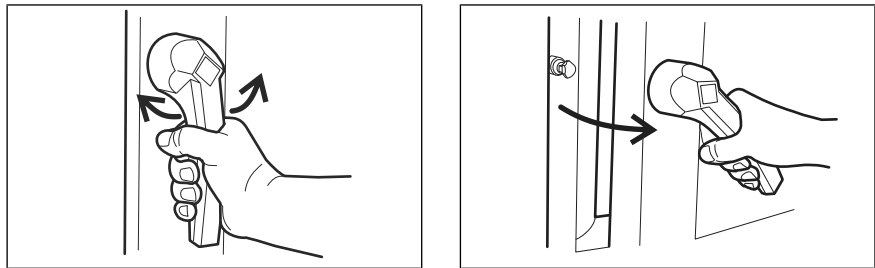


Image: Opening the 1-step door lock

1. Rotate the door handle counterclockwise or clockwise.  
↳ The cooking chamber door opens.

## INFORMATION

If the door handle is released, it returns automatically to its initial position.

2. Open the cooking chamber door completely.

### 6.3.2 Closing the 1-step door lock

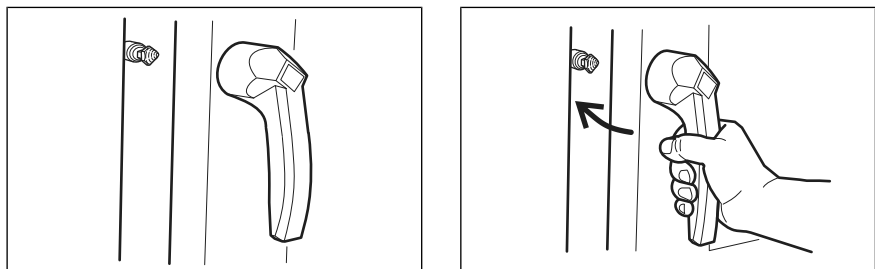


Image: Closing the 1-step door lock

**Prerequisite** Door handle in initial position

- Close the cooking chamber door with pressure.  
↳ The cooking chamber door is closed.

### 6.3.3 Opening the 2-step door lock

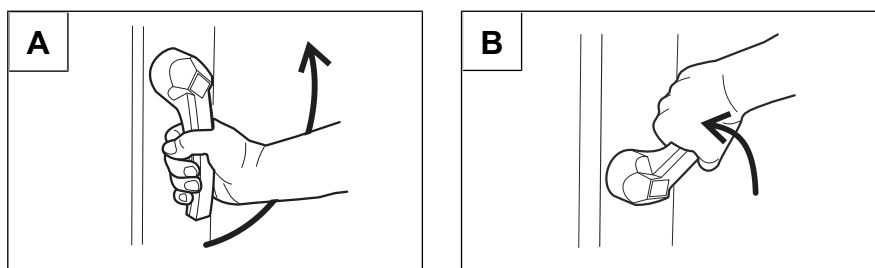


Image: Opening the 2-step door lock

## INFORMATION

On size 6 and size 10, first rotate the door handle counterclockwise.

1. Rotate the door handle to a horizontal position.  
↳ The cooking chamber door opens, but is still held.
2. Continue rotating the door handle upwards.  
↳ The cooking chamber door is no longer held.

---

### INFORMATION

If the door handle is released, it returns automatically to its initial position.

---

3. Open the cooking chamber door completely.

#### 6.3.4 Closing the 2-step door lock

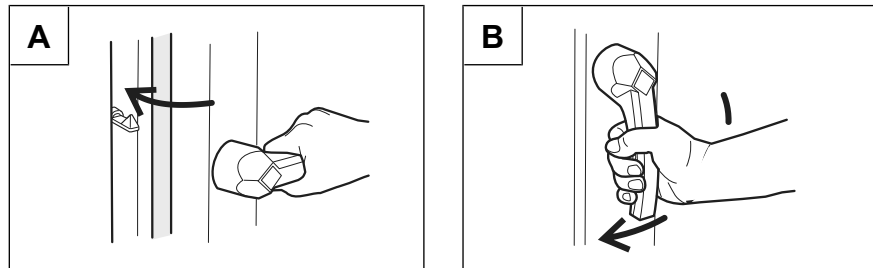


Image: Closing the 2-step door lock

**Prerequisite** Door handle in initial horizontal position

1. Close the cooking chamber door with pressure.  
↳ The cooking chamber door latches.
2. Rotate the door handle downwards.  
↳ The cooking chamber door is closed.

#### 6.4 Loading and emptying the unit

##### CAUTION

##### Risk of scalding from hot liquid

- Never insert a food-containing tray with cooking liquid above eye level.
- Use only suitable trays to hold food. The food-containing trays must rest securely on the support brackets.
- Always insert the food-containing trays into the U-rails.

##### CAUTION

##### Risk of property damage and personnel injury from exceeding the loading capacity

- Do not exceed the maximum loading capacity.

---

### INFORMATION

To not use bent or damaged hang-in frame.

---

### 6.4.1 Loading and emptying

#### Loading

1. Open cooking chamber door.
2. Insert food-containing trays into the hang-in frame.
3. Close the cooking chamber door.
4. Start the cooking process.

#### Emptying

1. Open cooking chamber door.
2. Remove the food-containing trays.
3. Remove all leftover foodstuff from the drainage sieve.
4. Leave the cooking chamber door slightly ajar.
  - ↳ This extends the service life of the door seal.
  - ↳ No moisture builds up in the cooking chamber.

### 6.4.2 Loading and emptying with a tray rack trolley

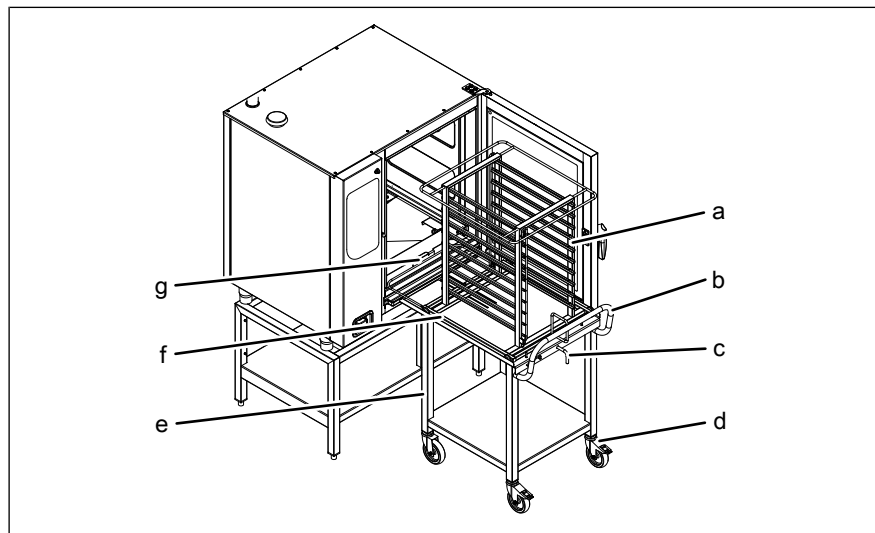


Image: Loading and emptying with a tray rack trolley

- |                   |                           |
|-------------------|---------------------------|
| a Tray rack       | e Tray rack trolley       |
| b Handle bar      | f Tray rack support plate |
| c Lever           | g Guide rail              |
| d Locking casters |                           |

#### Loading with a tray rack trolley

**Prerequisite** Remove support racks and place guide rails on pins  
Food-containing trays resting securely on the tray rack

1. Open cooking chamber door.
2. Rotate the lever on the tray rack trolley.
  - ↳ The tray rack is secured to prevent its rolling down.
  - ↳ Check that the tray rack is locked in place by pulling on it slightly.
3. Load the tray rack.

4. Position the tray rack trolley at the unit.  
↳ Lock the casters to prevent the trolley's rolling away.
5. Rotate the lever.  
↳ The tray rack is now free to move.
6. Insert the tray rack completely until the rollers rest in the openings in the guide rail.
7. Retract the tray rack support plate and secure in place with the lever.
8. Move the tray rack trolley away from the unit.
9. Close the cooking chamber door.
10. Start the cooking process.

### Emptying with a tray rack trolley

1. Open cooking chamber door.
2. Position the tray rack trolley at the unit.  
↳ Lock the casters to prevent the trolley's rolling away.
3. Insert the tray rack support plate and secure the tray rack on the plate.
4. Pull the tray rack onto the tray rack trolley and secure in place.
5. Release the locking casters and move the tray rack trolley away from the unit.
6. Remove all food residues from the drain screen.
7. Leave the cooking chamber door slightly ajar.  
↳ This extends the service life of the door seal.  
↳ No moisture builds up in the cooking chamber.

### 6.4.3 Loading and emptying with a tray trolley

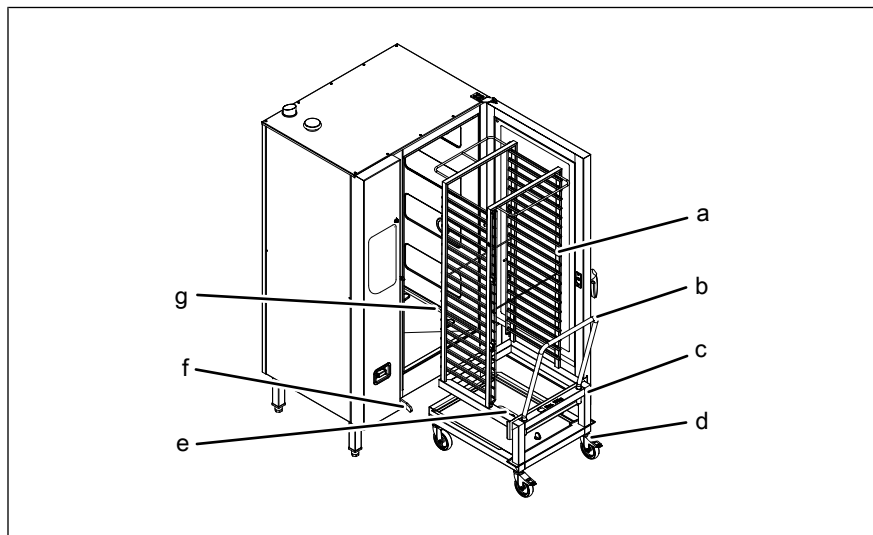


Image: Loading and emptying with a tray trolley

- |                   |                             |
|-------------------|-----------------------------|
| a Tray rack       | e Cleaning cartridge holder |
| b Handle bar      | f Guide rail (left)         |
| c Tray trolley    | g Guide rail (right)        |
| d Locking casters |                             |

### Loading with a tray trolley

**Prerequisite** Food-containing trays resting securely on the tray trolley

1. Load the tray trolley.
2. Move the tray trolley in completely.
3. Pull the push handle out of the tray trolley.
4. Close the cooking chamber door.
5. Start the cooking process.

### Emptying with a tray trolley

1. Open cooking chamber door.
2. Insert the push handle into the tray trolley.
3. Retract the tray trolley.
4. Remove all leftover foodstuff from the drainage sieve.
5. Leave the cooking chamber door slightly ajar.
  - ↳ This extends the service life of the door seal.
  - ↳ No moisture builds up in the cooking chamber.

## 6.5 Unit functions menu

Various functions or settings can be selected in the "Unit functions" menu.

### INFORMATION

All unit functions can also be accessed from within a cooking program by tapping the *blue* tab.

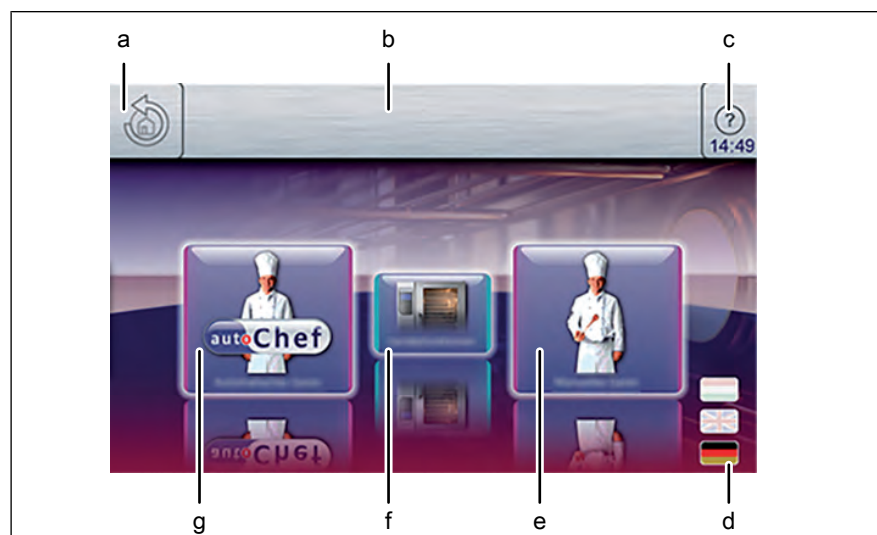


Image: Main menu

- |   |                           |   |                            |
|---|---------------------------|---|----------------------------|
| a | Back button               | e | "Manual cooking" button    |
| b | Information strip         | f | "Unit functions" button    |
| c | Help button               | g | "Automatic cooking" button |
| d | Language selection button |   |                            |

### INFORMATION

The equipment information is displayed without entering a password.

---

#### 6.5.1 Opening the Unit functions menu

**Prerequisite** Unit is on  
The Main menu is displayed

- Tap the "Unit functions" button.
- ↳ The *Unit functions* menu is displayed.

#### 6.5.2 Changing the basic settings

### INFORMATION

The basic settings for operation can be displayed, changed and exported by entering the password "111".

---

#### Opening the Setting menu

**Prerequisite** *Unit functions* menu open

1. Tap the "Settings" field.  
↳ The *PIN* window opens.



2. Enter the password.
3. Tap the *Confirm* button.  
↳ The *Unit settings* menu is displayed.  
↳ The basic settings can be changed.

**In addition to those described in this chapter, there are the following further functions.**

#### Audio settings

Selection of the volume of the signal tones.

#### Operation lock

Various settings as to whether and when operation lock is to be activated.

Entering and changing the code word.

### Standby mode

Deactivate the operation inhibit to set the standby mode.

When the standby mode is active, the touchscreen goes dark after a set time. The cooking chamber light switches off.

### Setting the background lighting

This setting is used to reduce the brightness of the touchscreen.

### CombiDoctor

CombiDoctor uses a selectable self-diagnostic program to check the components for climate control and cleaning.

### Delete user's own cooking programs

Delete all the cooking programs created by the user.

### Setting units

Set the units for temperature and liquid quantities.

The possibilities for temperature are °C and °F.

The possibilities for volume are mL, fl.oz (Imp.) and fl.oz (US)

### Display the error memory

Retrieve stored faults for forwarding to service partners.

### Import HansDampf programs

Import existing HansDampf programs.

### Importing manufacturer's cookbook

Import the cookbooks provided by the manufacturer.

### Select cookbook

Select the cookbooks typical of the country.

### Cookbook lock

Lock function for the cooking programs in autoChef.

Setting	Function
Unlocked	Deleting, changing and overwriting the cooking programs is possible
Disabled	Changes in the cooking steps, for example temperature increases, are possible. The preset values apply again the next time the cooking program is selected.
Fully locked	The cooking program can only be used in the way it has been stored. Changes in the cooking steps are not possible.

### Exporting log data

Export of log data for forwarding to the service technician.

### Load OEM settings

Special settings can be loaded.

**Eco display on or off**

Set the Eco display function.

**Select signal tones**

Selection of one of the four possible signal tones.

**Software update**

Update of the software via a USB flash drive.

**Import additional content**

Import of additional content via a USB flash drive.

**6.5.3 Retrieving unit information**

**INFORMATION**

The unit information contains data on the software and hardware version, the serial number of the unit and contact data.

**Prerequisite** The *Setting* menu is displayed



- Tap the "Unit information" field.
- ↳ The *Unit information* window is displayed.
- ↳ Unit information can now be read.

**6.5.4 Setting the date and time**

**INFORMATION**

Observe the displayed date and time format carefully. If values are invalid, the entry is not accepted.

**Prerequisite** The *Settings* menu is displayed

1. Tap the "Set the date and time" field.
  - ↳ The *Setting* window opens.
  - ↳ The *Keyboard* opens.



2. Enter the date and time.
3. Tap the Confirm button.
  - ↳ The *Keyboard* closes.
  - ↳ The date and time are set.



## 6.5.5 Presetting the language selection

### INFORMATION

A maximum of 5 languages can be specified for language selection in the main menu.

### INFORMATION

Highlighted fields represent the specified languages.

Fields that are not highlighted are languages that have not been specified.

### INFORMATION

The currently set language cannot be deselected.

**Prerequisite** The *Settings* menu is displayed

1. Tap the "Select language" field.  
↳ The *Languages* menu is displayed.



2. Select or deselect the language by tapping the fields with the country's flag.  
↳ The selected languages are displayed.
3. Tap the "OK" button.  
↳ Languages have been preset for language selection and are available in the main menu.

## 6.5.6 Setting favorites

Which view appears on the control panel once the unit is started is selected in the *Settings for favorites*. This limits the functions that can be used by the operator.

**Prerequisite** *Unit functions* menu open

1. Tap the Settings for favorites field.  
↳ The *Settings for favorites* window is displayed.



2. Using a swipe gesture, set the roller to the desired display.
3. Tap the "OK" button.
  - ↳ The Settings for favorites window closes.
  - ↳ The favorites are set.

### 6.5.7 Activating and canceling inhibit operation

---

#### INFORMATION

The display can be locked either by tapping and holding the information bar or automatically after a specified time without touching the display. The time until the display is locked is set in the parameter level.

---

#### Activating inhibit operation

**Prerequisite** The "Inhibit operation ON" function is activated in the *Setting* menu

- Tap and hold the center of the information strip for 3 seconds.
  - ↳ The Help button disappears and the lock symbol appears in the information strip.
  - ↳ The touchscreen is locked.

#### Canceling inhibit operation

**Prerequisite** The touchscreen is locked

1. Tap the lock symbol.
  - ↳ The Keyboard opens.



2. Enter the password.
  - ↳ Inhibit operation is canceled by entering the password "369".
  - ↳ The lock symbol and the keypad disappear. The *Help* button appears in the information strip and the touchscreen is unlocked.

### 6.5.8 Setting the background lighting

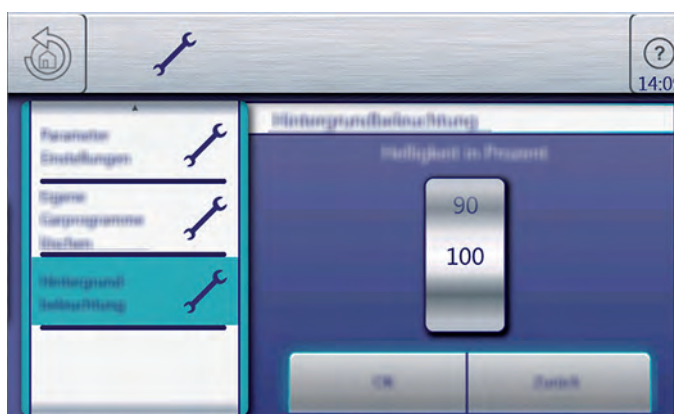


Image: Setting the brightness

**Prerequisite** The *Settings* menu is displayed

1. Tap the "Background lighting" field.
2. The *Brightness in percent* menu is displayed.
  - ↳ The roller shows the current value.
3. Using a swipe gesture, set the roller to the desired value.
4. Press the "OK" button.
  - ↳ The background lighting is set.

### 6.5.9 Setting the water filter maintenance

**Prerequisite** The *Settings* menu is displayed

1. Tap the "Water filter maintenance" field.
2. The *Water filter maintenance* menu is displayed.



- ↳ The display shows the entered date on which the reminder for the water filter maintenance is to be given.
- ↳ The filtered water quantity since the last filter change is displayed.
- ↳ The date for water filter maintenance can be entered with the keyboard and confirmed with the "OK" field.

### 6.5.10 Possible settings in the parameter level

**Prerequisite** The *Settings* menu is displayed

1. Tap the "Settings parameters" field.
    - ↳ The *Settings parameters* menu is displayed.
  2. Using a swiping gesture, set the rollers to the desired parameter.
    - ↳ The designation of the selected parameter is displayed.
  3. Tap the "Read" button.
    - ↳ The current value of the selected parameter is displayed.
  4. Delete the current value with the keyboard.
  5. Enter the new value with the keyboard.
  6. Tap the "Write" button.
    - ↳ The displayed value is adopted for this parameter.
- ↳ The parameter is changed.

#### Basic setting parameters

The unit is delivered with presets. The values in the following list can be modified in the parameter level.

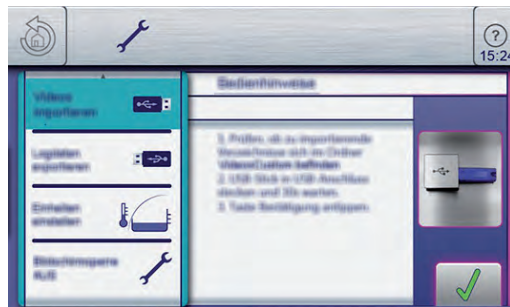
Basic setting	Parameter s	Standard value	Range of adjustment	Explanation
<b>Lockscreen</b>				
Lockscreen	662	0	0 = Deactivated 1 = Activated	Activate or deactivate screen locking. Screen locking is activated after a certain period of time if entries are no longer made on the touchscreen.
Password	7	111	0 — 300	The password for the basic settings can be changed in this range.

Basic setting	Parameter s	Standard value	Range of adjustment	Explanation
<b>Cooking modes</b>				
Preselected steaming temperature	9	100	30 °C (86 °F) — 130 °C (266 °F)	Preset temperature for steaming
Preset combisteaming temperature	10	150	30 °C (86 °F) — 250 °C (482 °F)	Preset temperature for combisteaming
Preselect hot air temperature	11	180	30 °C (86 °F) 250 °C (482 °F)—	Preset the temperature for hot air
Preset regeneration temperature	12	130	30 °C (86 °F) — 180 °C (356 °F)	Preset temperature for regeneration
<b>Ready2Cook</b>				
Ready2Cook Active	607	1	0 = not activated	Indicates whether or not the presetting is activated.
			1 = Activated	
Preheating temperature Ready2Cook	4	15	0 — 30%	When loaded a full charge of large masses (roasts, loaf of bread), increase the preheat temperature so that the oven temperature does not drop too suddenly.
<b>Cooking</b>				
SES: Use at the end of the cooking program	624	1	0 = Deactivated 1 = Activated	Presetting for Steam Exhaust System when creating a new cooking program
Query: Restart after cooking program is interrupted	697	0	0 = No query 1 = Query only with AutoChef 2 = Query always activated	Setting for the behavior after an interruption of the cooking program
Apply changes after the end of the cooking program	696	0	0 = Do not apply 1 = Apply	Automatic saving of changes made (save at the end of a cooking program).
<b>Standby mode</b>				
Wait time for standby mode	704	0	0 = not activated 1 — 7200 s	The background lighting is reduced if entries are no longer made on the touchscreen. Activated only if operation inhibit is not active.
<b>Background lighting</b>				
Brightness of the background lighting	705	100	20 — 100 %	The brightness of the background lighting is adjustable and is used, for instance, to reduce the brightness of the screen in dark rooms or for Frontcooking.
<b>FlexiCombi Air</b>				
Condensation-hood after-running time	5	60	0 – 600 s	Time extension for the condensation hood, after the cooking chamber door has been opened

### 6.5.11 Importing video

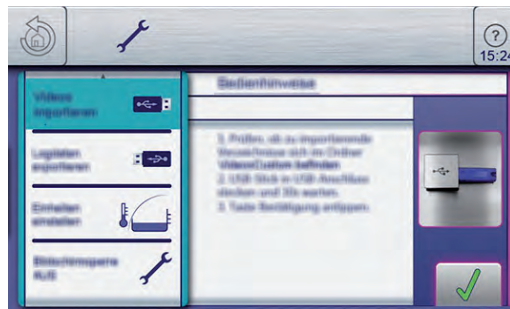
**Requirements** WMV format  
Data size < 50 MB

1. Create the directory *VideosCustom* on a USB stick.
2. Save the desired video in this directory.  
↳ USB stick prepared.
3. Insert the USB stick into the MultiPort.
4. Open the *Unit functions* menu.
5. Open the *Settings* menu.
6. Select the *Import videos* menu.



7. Follow the operating instructions.  
↳ Video imported.

### 6.5.12 Importing images



**Requirements** PNG format  
Data size < 50 MB

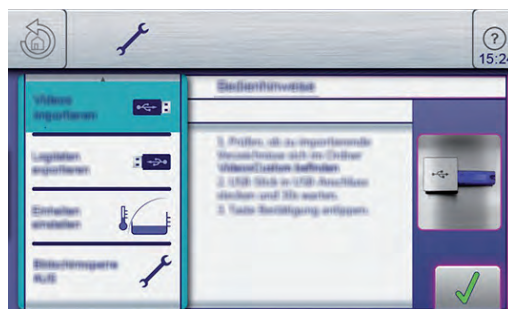
1. Create the directory *autoChefImages* on a USB stick.
2. Save the desired image in this directory.  
↳ USB stick prepared.
3. Insert the USB stick into the MultiPort.
4. Open the *Unit function* menu.
5. Open the *Settings* menu.
6. Select the *Import image* menu.

7. Follow the operating instructions.
- ↳ Image imported.

### 6.5.13 Importing recipes

#### INFORMATION

Text and graphics must be separated when converting into HTML format. For instance, in Microsoft Word the text is saved under the file type using the save filter "Web page, filtered". Before importing, make sure the file type ends with ".html".



**Requirements** HTML format

Data size < 50 MB

1. Create the directory *FCBrowserFiles* on a USB stick.
  2. Save the desired recipe in this directory.
    - ↳ USB stick prepared.
  3. Insert the USB stick into the MultiPort.
  4. Open the *Unit functions* menu.
  5. Open the *Settings* menu.
  6. Open the *Import recipe* menu.
  7. Follow the operating instructions.
- ↳ Recipe imported.

## 6.6 Basic functions

### 6.6.1 Setting the cooking temperature

#### INFORMATION

The temperature range differs, depending on the cooking mode. At a cooking temperature outside the allowed temperature range, the display turns red.

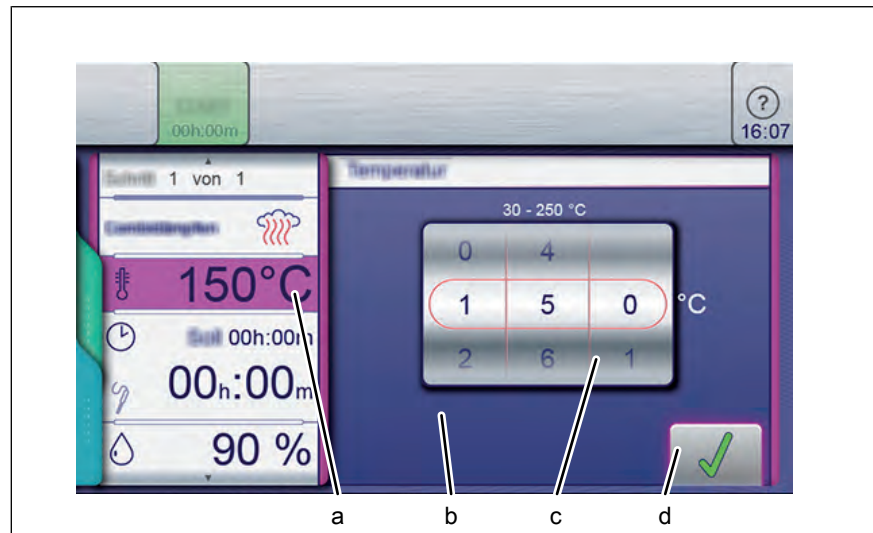


Image: Cooking temperature setting window

- a *Temperature field*
- b *Setting window*
- c *Rollers*
- d *Confirm button*

### Prerequisite Cooking program selected

1. Tap the *Cooking temperature* field.  
↳ The *Setting* window is displayed.
  2. Tap the *Temperature* field.
  3. Using a swipe gesture, set the rollers to the desired temperature.  
↳ Swipe up / down to increase / decrease the cooking temperature.
  4. Tap the *Confirm* button.  
↳ The *Setting* window closes.  
↳ The *Cooking mode* window displays the set cooking temperature.
- ↳ The cooking temperature is set.



## 6.6.2 Setting the cooking time and continuous operation

### Setting the cooking time

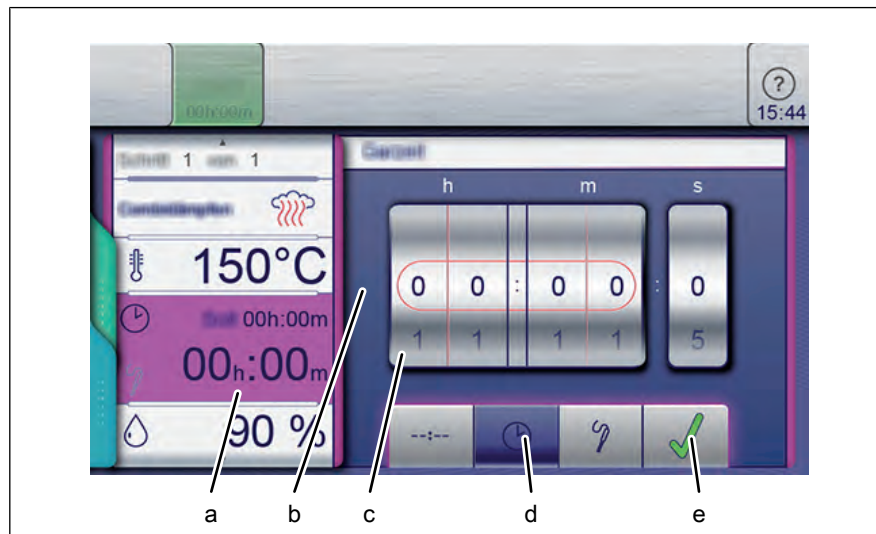


Image: Setting the cooking time

- |   |                    |   |                     |
|---|--------------------|---|---------------------|
| a | Cooking time field | d | Cooking time button |
| b | Setting window     | e | Confirm button      |
| c | Rollers            |   |                     |

#### Prerequisite Cooking program selected

1. Tap the *Cooking time* field.
    - ↳ The *Setting* window is displayed.
  2. Tap the *Cooking time* button.
  3. Using a swipe gesture, set the rollers to the desired temperature.
    - ↳ Swipe up / down to increase / decrease the cooking time.
  4. Tap the *Confirm* button.
    - ↳ The *Setting* window closes.
    - ↳ The *Cooking mode* window displays the cooking time.
- ↳ The cooking time is set.

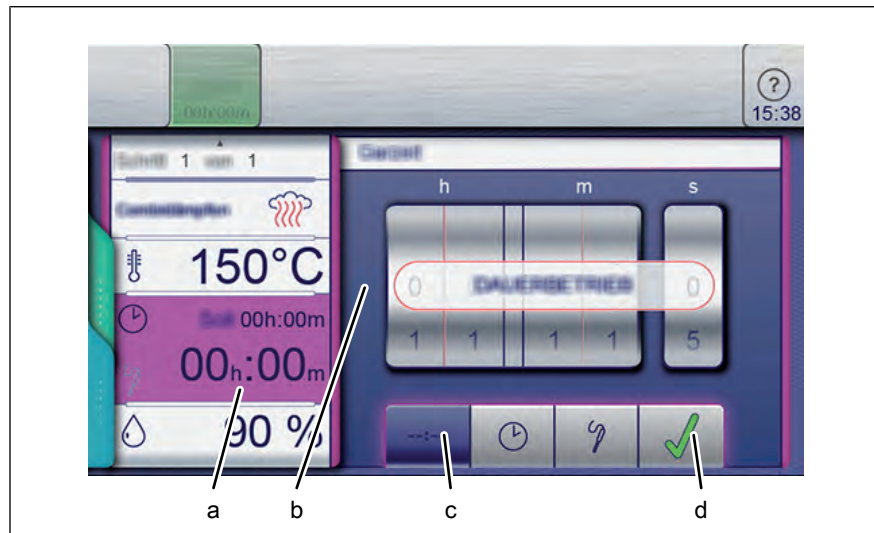


Image: Setting the cooking time to continuous operation

- |   |                    |   |                             |
|---|--------------------|---|-----------------------------|
| a | Cooking time field | c | Continuous operation button |
| b | Setting window     | d | Confirm button              |

**Prerequisite** Cooking program selected

1. Tap the *Cooking time* field.  
↳ The *Setting* window is displayed.
  2. Tap the *Continuous operation* button.
  3. Tap the *Confirm* button.  
↳ The *Setting* window closes.  
↳ The *Cooking mode* window displays the cooking time.
- ↳ The cooking time is set to continuous operation and will end after 24 hours.

## INFORMATION

A cooking step which is running in continuous operation can be converted to Rest time.

### 6.6.3 Setting the core temperature

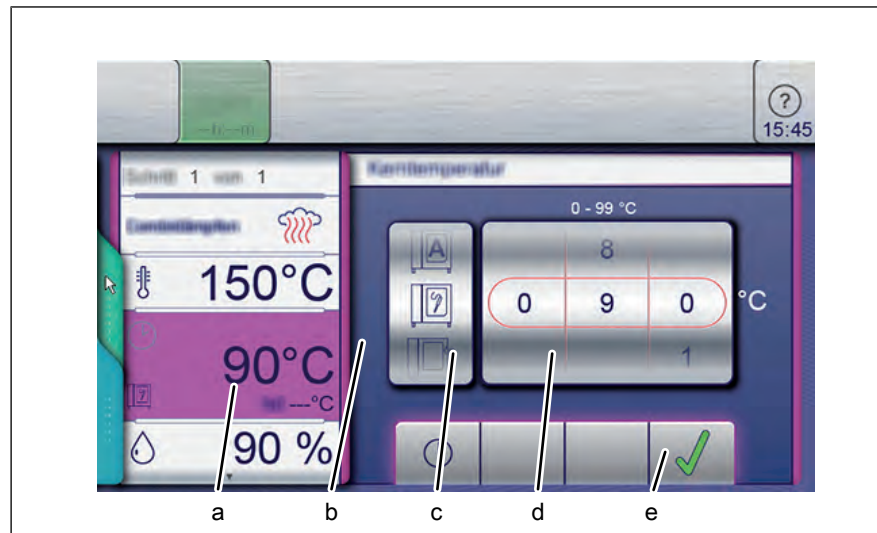


Image: Core temperature setting window for internal and external display

- |   |                                     |   |                    |
|---|-------------------------------------|---|--------------------|
| a | Core temperature field              | d | Temperature roller |
| b | Setting window                      | e | Confirm button     |
| c | Core temperature sensor type roller |   |                    |

**Prerequisite** Cooking program selected  
Cooking time set

1. Tap the *Cooking time* field.
  - ↳ The *Cooking time* setting window is displayed.
2. Tap the *Core temperature* field.
  - ↳ The *Core temperature* setting window is displayed.
3. Using a swipe gesture, set the rollers to the desired temperature.
  - ↳ Swipe up / down to increase / decrease the core temperature.
4. Tap the *Confirm* button.
  - ↳ The *Setting* window closes.
  - ↳ The *Cooking time* field changes to the *Core temperature* field.

## INFORMATION

You can find further information on working with the core temperature sensor under Using the core temperature sensor.

### 6.6.4 Setting the fan speed and direction of rotation

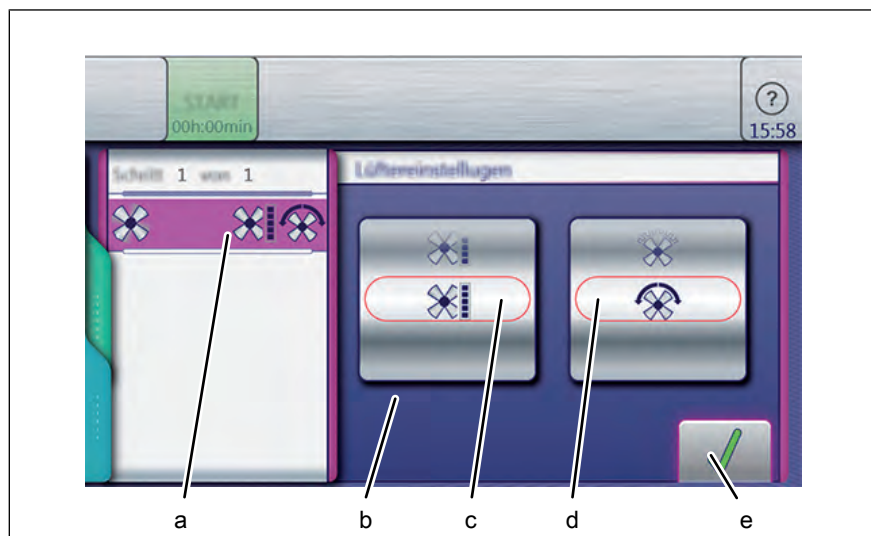


Image: Setting the fan speed and direction of rotation

- |   |                   |   |                               |
|---|-------------------|---|-------------------------------|
| a | Fan setting field | d | Fan rotation direction roller |
| b | Setting window    | e | Confirm button                |
| c | Fan speed roller  |   |                               |

**Prerequisite** Cooking program selected

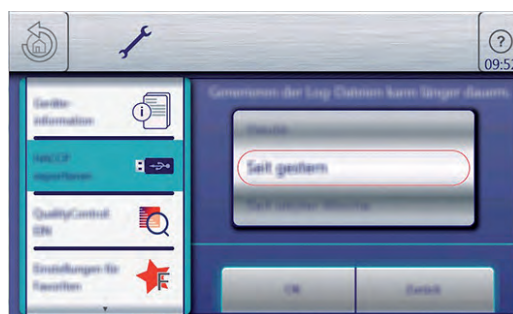
1. Tap the *Fan setting* field.  
↳ The Setting window opens.
2. Using a swipe gesture, set the *Fan speed* roller to the desired value.
3. Using a swipe gesture, set the *Fan rotation direction* roller to the desired value.
4. Tap the *Confirm* button.  
↳ The fan speed and fan rotation direction are set.

### 6.6.5 Exporting the HACCP log

**Prerequisite** USB stick inserted

User logged in with password under unit settings

1. Tap the "Export HACCP" field.



2. Select the time period of the logs.

3. Tap the *Confirm* button.  
↳ The *Operating instructions* window opens.
4. Tap the *Confirm* button.  
↳ The HACCP log is exported to the USB stick.  
↳ The *Confirm* window opens.
5. Tap the *Confirm* button.  
↳ the *Confirm* window closes.

## INFORMATION

The HACCP log can also be transferred via a kitchen guiding system.

### 6.6.6 Using Perfection (regeneration)

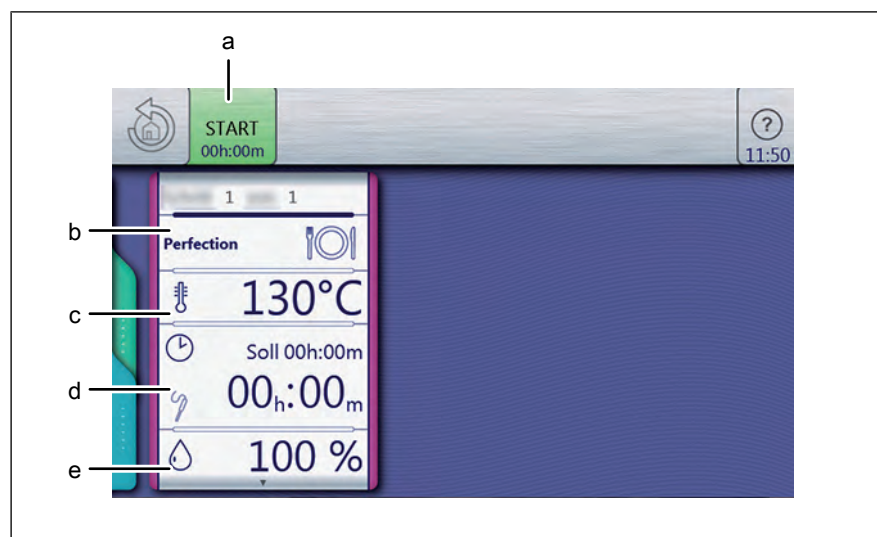


Image: Window for setting the Perfection cooking mode

- |                             |                             |
|-----------------------------|-----------------------------|
| a "Start" button            | d <i>Cooking time</i> field |
| b <i>Cooking mode</i> field | e <i>Moisture</i> field     |
| c <i>Temperature</i> field  |                             |

#### Starting Perfection

- Prerequisite** Food to be cooked in the insert on the shelf  
Door closed  
*Manual cooking* menu displayed

1. Tap the *Perfection* mode field.  
↳ The *Cooking mode* window is displayed.
2. Configure the settings.  
↳ The *Cooking mode* window shows the configured settings.

3. Tap the "Start" button in the information strip.
  - ↳ The unit heats up.
  - ↳ The "Start" button is replaced with the "Stopp" button.
  - ↳ The cooking time is updated in the *Cooking mode* window.
- ↳ Perfection is started.

**Ending Perfection**

**Prerequisite** Perfection started  
Cooking time has not expired

1. Tap the "Stopp" button in the information strip.
- or
2. Wait until the cooking time ends.
    - ↳ Heating of the unit is ended.
    - ↳ The "Stopp" button is replaced with the "Start" button.
    - ↳ The cooking time is reset.
- ↳ Perfection is ended.

**6.6.7 Using PerfectHold**

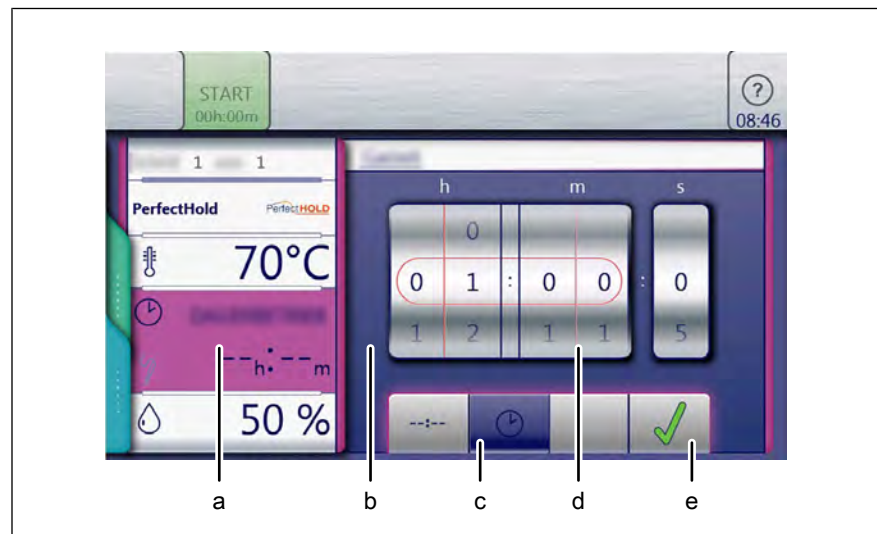


Image: Window for setting PerfectHOLD

- a *Cooking time* field
- b *Setting window*
- c *Cooking time* button
- d Rollers
- e *Confirm* button

**Prerequisite** Cooking program has ended  
Manual cooking menu open  
Advanced cooking function selected

1. Tap the *Temperature* field.
2. Using a swipe gesture, set the rollers to the desired temperature.

3. Tap the *Confirm* button.
    - ↳ The *Setting* window closes.
  4. Tap the *Cooking time* field.
    - ↳ The *Setting* window is displayed.
  5. Tap the *Cooking time* button.
  6. Using a swipe gesture, set the rollers to the desired temperature.
    - ↳ Swipe up / down to increase / decrease the cooking time.
  7. Tap the *Confirm* button.
    - ↳ The *Setting* window closes.
    - ↳ The *Cooking mode* window displays the set cooking time.
- ↳ PerfectHOLD is set for time control.

### 6.6.8 Ready2CookSetting

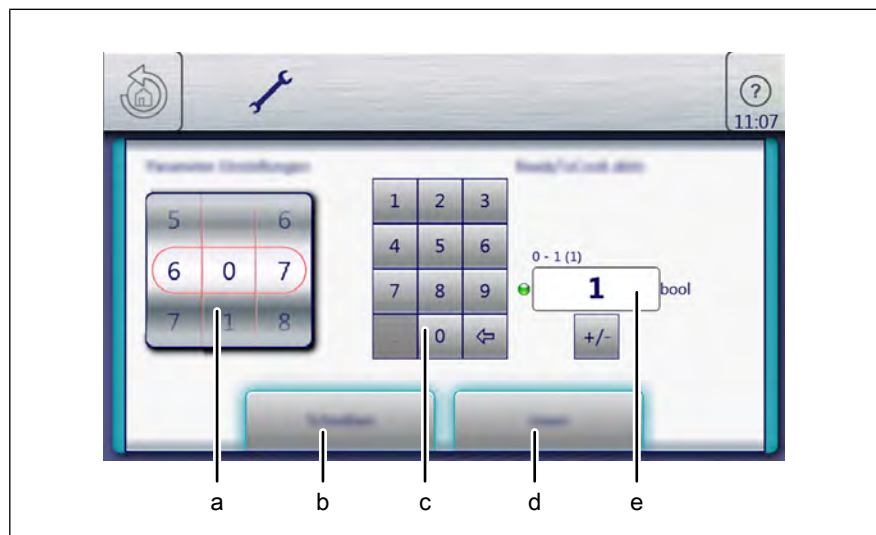


Image: Window for setting the "Ready2Cook" parameters

- |   |                        |   |                    |
|---|------------------------|---|--------------------|
| a | Rollers                | d | <i>Read</i> button |
| b | <i>Write</i> button    | e | <i>Display</i>     |
| c | <i>Keyboard</i> button |   |                    |

#### **Prerequisite** Cooking function menu open

1. Tap the *Settings* field.
2. Enter and confirm PIN 111.
3. Tap the *Parameters settings* field.
  - ↳ The *Parameter settings* menu is displayed.
4. Using a swipe gesture, set the rollers to the desired temperature.
  - ↳ The designation of the selected parameter is displayed.
5. Tap the *Read* button.
  - ↳ The current value is displayed.
  - ↳ Switch the function on or off as necessary.
6. Delete the current value with the keyboard.
7. Enter the new value with the keyboard.

8. Tap the *Write* button.
  - ↳ The displayed value is applied.
  - ↳ The *Ready2Cook* function is set.

### 6.6.9 Using start time selection

#### Setting the start time selection

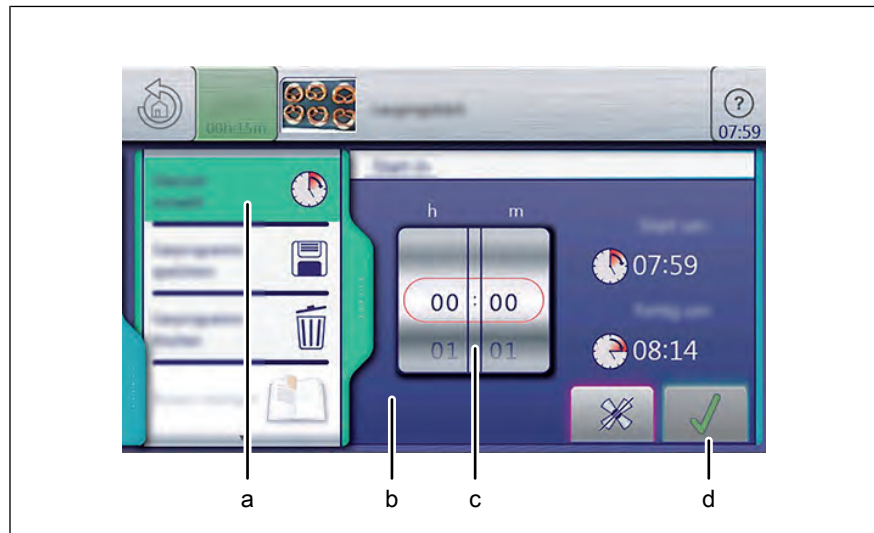


Image: Window for setting the start time selection

- |   |                                    |   |                       |
|---|------------------------------------|---|-----------------------|
| a | <i>Start time selection</i> field  | c | Rollers               |
| b | <i>Start time selection</i> window | d | <i>Confirm</i> button |

**Prerequisite** Cooking program has ended  
*AutoChef* automatic cooking menu open  
Advanced cooking function selected

1. Tap the *Start time selection* field.
  2. Using a swipe gesture, set the rollers to the desired temperature.
    - ↳ Swipe up or down.
    - ↳ The start time is set in minutes and seconds.
  3. Tap the *Confirm* button.
    - ↳ The *Start time selection* window displays the set start time.
    - ↳ The beginning and end of the start time is displayed in real time.
- ↳ Start time selection is set for time control.



### Changing the start time selection

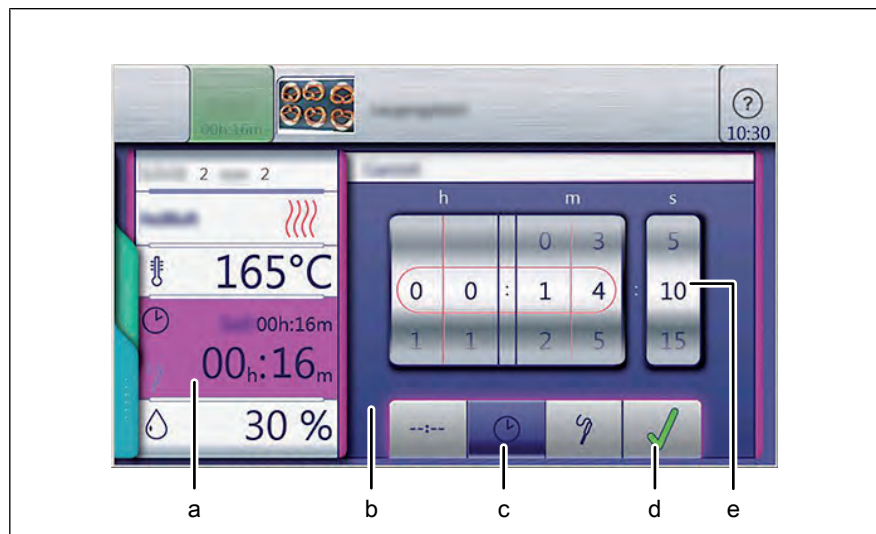


Image: Window for changing the start time setting

- |   |                             |   |                |
|---|-----------------------------|---|----------------|
| a | Start time selection field  | d | Confirm button |
| b | Start time selection window | e | Rollers        |
| c | Start time button           |   |                |

**Prerequisite** Cooking program has ended  
*AutoChef* automatic cooking menu open  
 Advanced cooking function selected

1. Tap the *Start time selection* button.  
 ↳ The *Start time selection* field displays the preset start time.
2. Using a swipe gesture, set the rollers to the desired temperature.
3. Tap the *Confirm* button.  
 ↳ The start time selection is set to a new value.

#### 6.6.10 Steam Exhaust System (SES)

##### INFORMATION

The *Steam Exhaust System (SES)* automatically extracts the steam out of the cooking chamber.

It is on by default and can be switched off for individual programs.

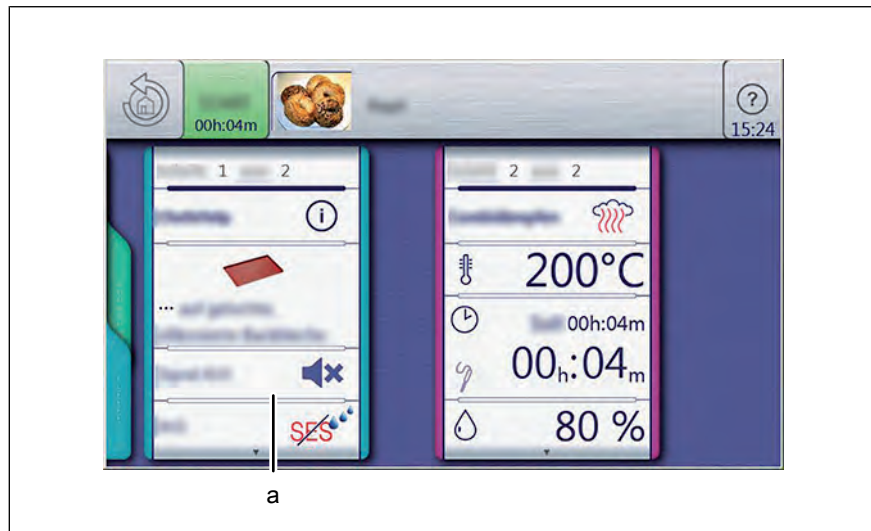


Image: Window for selecting the Steam Exhaust System (SES)

a *Steam Exhaust System* field

**Prerequisite** *Manual cooking* menu open

Desired cooking mode selected

The first step of the cooking program is created

1. Tap the field for the desired cooking mode.
2. Swipe upwards to open the next page.
  - ↳ The next page is opened.
  - ↳ The page with the *SES* field is displayed.
3. Switch the function on or off as necessary.
4. Tap the *SES* field.
  - ↳ The "ON" display switches automatically to "OFF" and vice versa.
  - ↳ The *SES* function is set.

### 6.6.11 RackControlUsing 2

#### INFORMATION

Set parameters such as the cooking time or core temperature can be changed for selected shelves during the cooking process. The cooking process is not interrupted.

Parameters such as the cooking chamber humidity, cooking chamber temperature and fan speed can be accessed and set.

These changes apply only to the currently running cooking program and are not retained as presets.

## RackControlSetting and starting 2

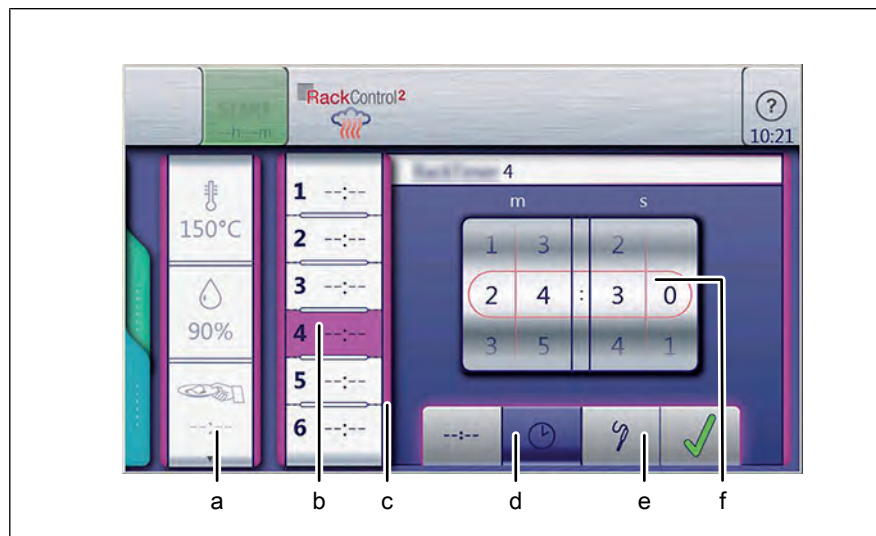


Image: Window for setting the RackControl2 cooking time

- |   |                   |   |                   |
|---|-------------------|---|-------------------|
| a | Settings field    | d | Start time button |
| b | Shelf field       | e | Confirm button    |
| c | Start time window | f | Rollers           |

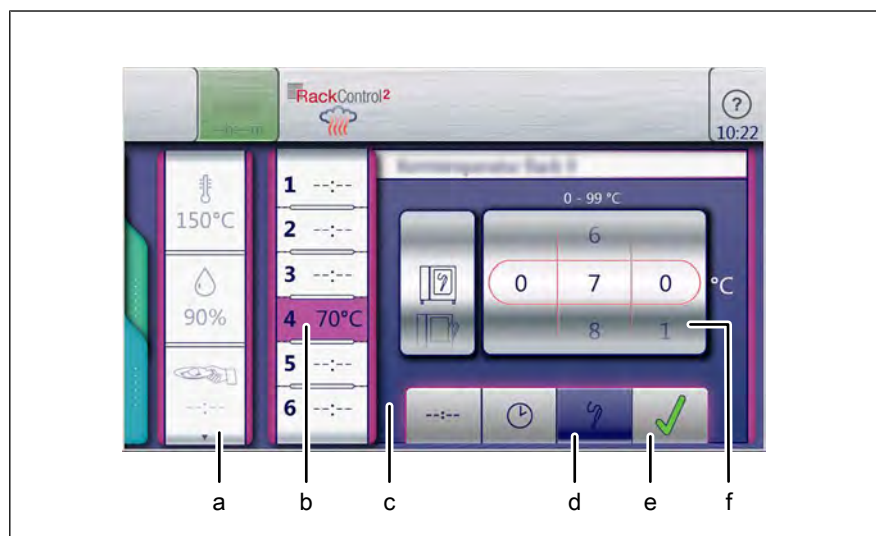


Image: Window for setting the RackControl2 core temperature

- |   |                         |   |                         |
|---|-------------------------|---|-------------------------|
| a | Settings field          | d | Core temperature button |
| b | Core temperature field  | e | Confirm button          |
| c | Core temperature window | f | Rollers                 |

**Prerequisite** *Manual cooking* field is selected

1. Tap the *RackControl2* field.
2. Tap the *Cooking mode* field.
3. Tap the *Settings* field.
4. Swipe upwards to open the next page.
  - ↳ The next page with the *Fan setting* field is displayed.
5. Configure the fan settings as necessary.

6. Select the desired shelf.
7. Configure and confirm the desired settings (See "Setting the cooking time" and "Setting the core temperature").
  - ↳ RackControl2 is set for the selected shelf.
8. Configure settings for additional shelves as necessary.
9. Tap the "Start" button in the information strip.
  - ↳ The display changes to the "Actual value" display.
  - ↳ The unit heats up.
  - ↳ The "Start" button is replaced with the "Stopp" button.
- ↳ RackControl2 is started.

### RackControlEnding 2

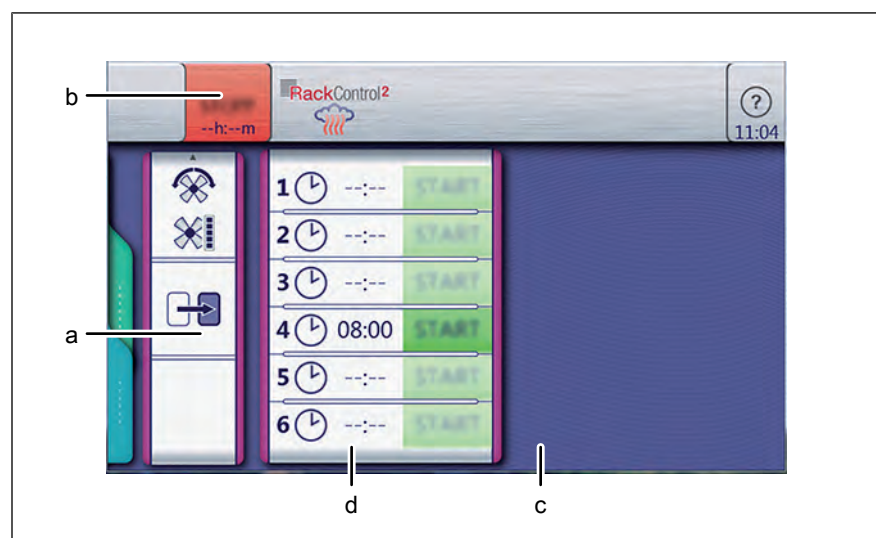


Image: Window for ending RackControl2 earlier

- |   |                |   |                |
|---|----------------|---|----------------|
| a | Continue field | c | Setting window |
| b | Stopp button   | d | Shelf field    |

**Prerequisite** RackControl2 is started  
Preheat temperature not reached

1. Tap the *RackControl2* window.
    - ↳ The last *Setting* window is displayed.
  2. Swipe upwards to open the next page.
  3. Tap the *Continue* field.
    - ↳ Heating is interrupted.
- ↳ RackControl2 starts at the current temperature.

## 6.6.12 FamilyMixUsing

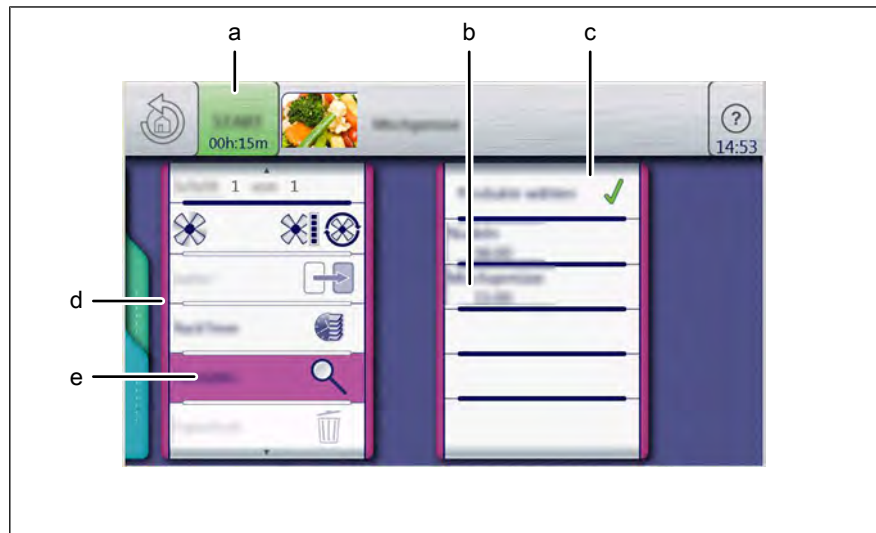


Image: Window for selecting FamilyMix

- |   |                        |   |                 |
|---|------------------------|---|-----------------|
| a | Start button           | d | Settings field  |
| b | Product overview field | e | FamilyMix field |
| c | Product field          |   |                 |

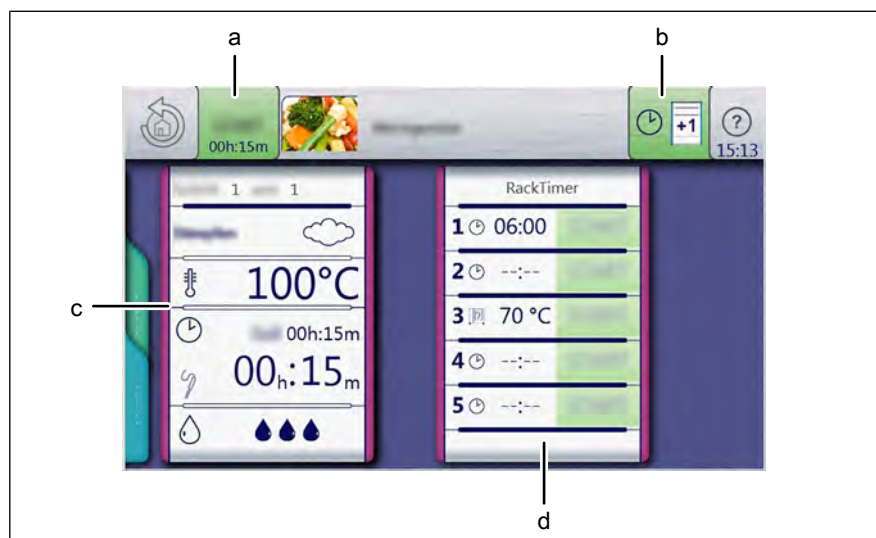


Image: Window for setting FamilyMix

- |   |                               |   |                |
|---|-------------------------------|---|----------------|
| a | Start button                  | c | Setting field  |
| b | Cooking time extension button | d | fieldRackTimer |

**Prerequisite** *Manual cooking field is selected*  
*Cooking program loaded*

1. Tap the *Settings* field.
2. Tap the *FamilyMix* field.
3. Tap the *Product overview* field and select product.
  - ↳ Tap the *Product* field: The product is selected.
  - ↳ Tap the *Product* field again: Product selection is canceled.

4. Tap the "Start" button.
  - ↳ The display changes to "Ready2Cook".
  - ↳ The unit heats up.
  - ↳ The "Start" button is replaced with the "Stopp" button.
5. Wait until the cooking time ends.
  - ↳ Heating of the unit is ended.
  - ↳ The "Stopp" button is replaced with the "Start" button.
  - ↳ The cooking time is reset.
  - ↳ The *FamilyMix* function is set.

### 6.6.13 Using continue cooking

#### INFORMATION

When selecting products with different preset cooking times, the cooking time for selected products can be extended on an individual basis.

#### INFORMATION

*Continue cooking* can be set for up to 5 minutes in 1-minute increments.

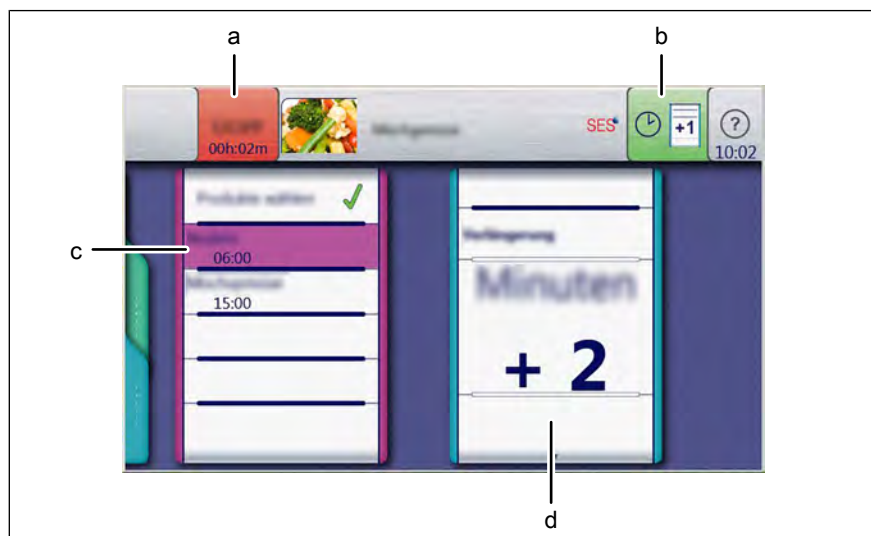


Image: Window for selecting cooking time extension

- |   |                         |   |                        |
|---|-------------------------|---|------------------------|
| a | Stopp button            | c | Product field          |
| b | Continue cooking button | d | Continue cooking field |

**Prerequisite** Cooking program selected  
The *RackTimer* function is set

1. Tap the "Start" button.
  - ↳ The unit heats up.
  - ↳ The cooking program starts.
  - ↳ The "Start" button is replaced with the "Stopp" button.

2. Press the "Stop" button.
    - ↳ The cooking program is interrupted.
    - ↳ The "Continue cooking" button appears in the information strip.
  3. Tap the "Continue cooking" button.
  4. Since the desired time for continued cooking.
    - ↳ The cooking time is increased in 1-minute increments.
    - ↳ The modified cooking time applies only to the current cooking program.
    - ↳ It does not change the saved cooking program.
    - ↳ The *Continue cooking* function is set.
  5. Tap the "Start" button.
    - ↳ The cooking program starts.
    - ↳ The cooking time is extended by the desired time.
- ↳ The *Continue cooking* function is running.

### 6.6.14 Setting manual steaming

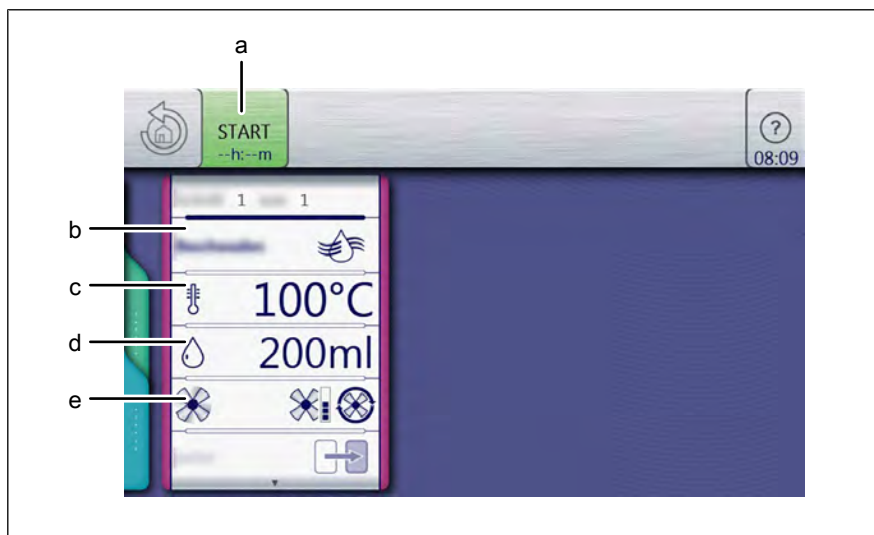


Image: Window for setting manual steaming

- |                                |                                |
|--------------------------------|--------------------------------|
| a "Start" button               | d <i>Moisture amount</i> field |
| b <i>Manual steaming</i> field | e <i>Fan setting</i> field     |
| c <i>Temperature</i> field     |                                |

**Prerequisite** Manual cooking menu open  
Advanced cooking function selected

1. Tap the *Temperature* field.
2. Using a swipe gesture, set the rollers to the desired temperature.
  - ↳ Swipe up / down to increase / decrease the cooking temperature.
3. Tap the *Confirm* button.
  - ↳ The *Setting* window closes.

4. Tap the *Desired injection amount* field.
    - ↳ The *Setting* window is displayed.
  5. Using a swipe gesture, set the rollers to the desired temperature.
    - ↳ Swipe up / down to increase / decrease the desired injection amount.
  6. Tap the *Confirm* button.
    - ↳ The *Setting* window closes.
- ↳ Manual steaming is set.

### 6.6.15 Setting a resting step

#### INFORMATION

The *Add resting step* function is available at any time.

Unless saved, the step applies only to the current cooking program.



Image: Window for adding a resting step

a Start button

b Resting step field

**Prerequisite** *Automatic cooking* menu open  
Cooking program selected

1. Select the *New step* function.
2. Tap the *Resting step* field.
  - ↳ The *Manual cooking* menu appears.
3. Configure the settings.
  - ↳ Set the cooking mode.
  - ↳ Set the temperature.
  - ↳ Set the time.
  - ↳ Set the moisture.
4. Tap the "Start" button.
  - ↳ The *Resting step* is added to the current program.
  - ↳ The *Resting step* is not saved in the cooking program.



5. Save the cooking program.  
↳ The *Resting step* is saved in the cooking program.

## 6.6.16 QualityControlUsing

### INFORMATION

*QualityControl* is an automatic cooking time optimization function based on automatic temperature adjustment. It optimizes the preheating process.

It is on by default and can be switched off for individual programs.

### INFORMATION

The current setting applies to all cooking programs until changed.

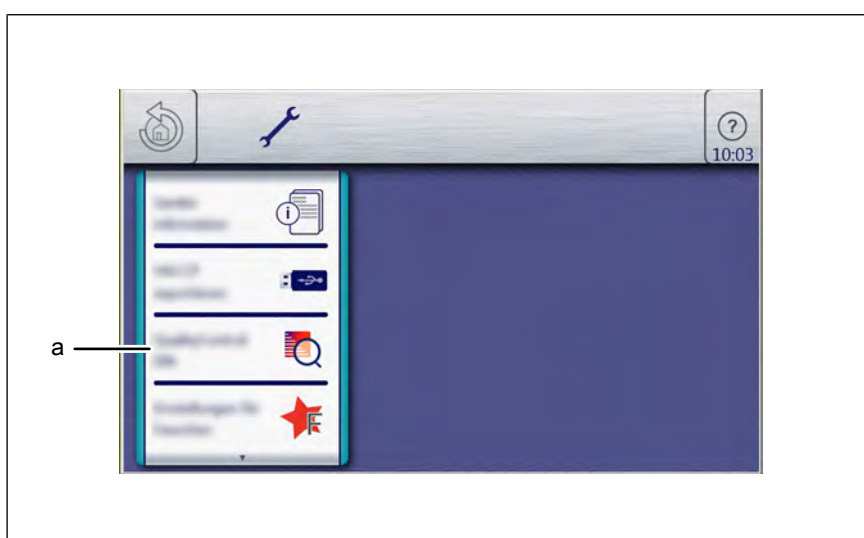


Image: Window for selecting QualityControl

a field *QualityControl*

**Prerequisite** *Cooking function* menu open

1. Tap the *Settings* field.
  2. Enter and confirm PIN *111*.  
↳ The *QualityControl* field is displayed.
  3. Switch the function on or off as necessary.
  4. Tap the *QualityControl* field.  
↳ The "ON" display switches automatically to "OFF" and vice versa.
- ↳ The *QualityControl* function is set.

### 6.6.17 Using LT cooking

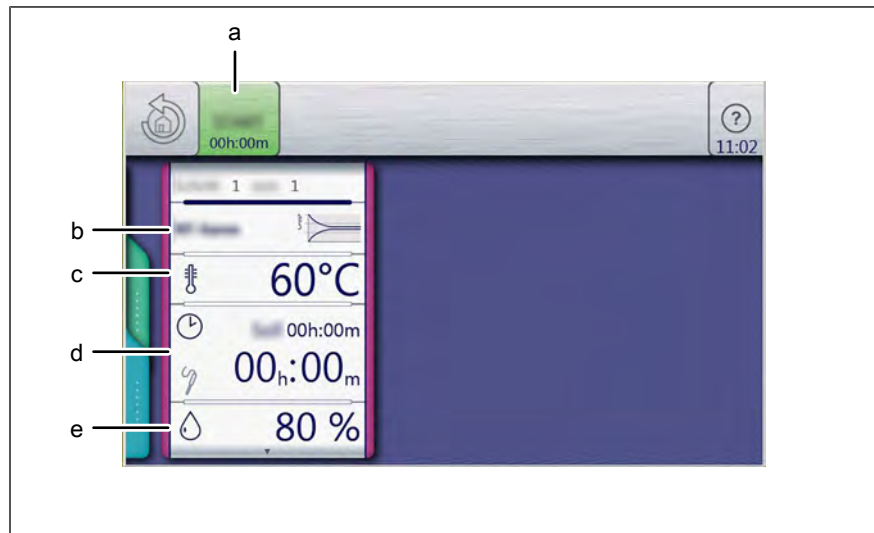


Image: Window for setting the Delta-T cooking mode

- |   |                                      |   |                    |
|---|--------------------------------------|---|--------------------|
| a | "Start" button                       | d | Cooking time field |
| b | Cooking mode field                   | e | Moisture field     |
| c | Cooking temperature difference field |   |                    |

#### Starting LT cooking

**Prerequisite** Food to be cooked in the insert on the shelf

Core temperature sensor set

Door closed

*Manual cooking* menu displayed

1. Tap the *LT cooking* mode field.  
↳ The *Cooking mode* window is displayed.
2. Configure the settings.  
↳ The *Cooking mode* window shows the configured settings.
3. Tap the "Start" button in the information strip.  
↳ The unit heats up.  
↳ The "Start" button is replaced with the "Stopp" button.  
↳ The cooking time is updated in the *Cooking mode* window.  
↳ LT cooking is started.

#### Ending LT cooking

**Prerequisite** LT cooking started

Cooking time has not expired

1. Tap the "Stopp" button in the information strip.
- or

2. Wait until the cooking time ends.
  - ↳ Heating of the unit is ended.
  - ↳ The "Stopp" button is replaced with the "Start" button.
  - ↳ The cooking time is reset.
- ↳ LT cooking is ended.

### 6.6.18 Using Delta-T cooking

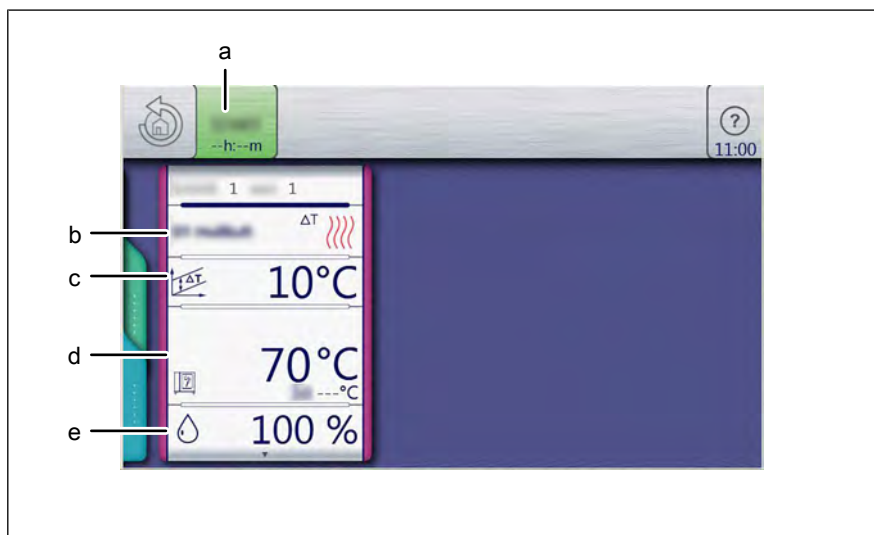


Image: Window for setting the Delta-T cooking mode

- |  |                          |
|--|--------------------------|
| a "Start" button                       | d Core temperature field |
| b Cooking mode field                   | e Moisture field         |
| c Cooking temperature difference field |                          |

#### Starting Delta-T cooking

- Prerequisite** Food to be cooked in the insert on the shelf  
 Core temperature sensor set  
 Door closed  
*Manual cooking* menu displayed

1. Tap the *Delta-T cooking* mode field.
  - ↳ The *Cooking mode* window is displayed.
2. Configure the settings.
  - ↳ The *Cooking mode* window shows the configured settings.
3. Tap the "Start" button in the information strip.
  - ↳ The unit heats up.
  - ↳ The "Start" button is replaced with the "Stopp" button.
  - ↳ The cooking time is updated in the *Cooking mode* window.
- ↳ Delta-T cooking is started.

### Ending Delta-T cooking

**Prerequisite** Delta-T cooking started  
Cooking time has not expired

1. Tap the "Stopp" button in the information strip.
- or
2. Wait until the cooking time ends.
    - ↳ Heating of the unit is ended.
    - ↳ The "Stopp" button is replaced with the "Start" button.
    - ↳ The cooking time is reset.
- ↳ Delta-T cooking is ended.

### 6.6.19 Using the barcode scanner

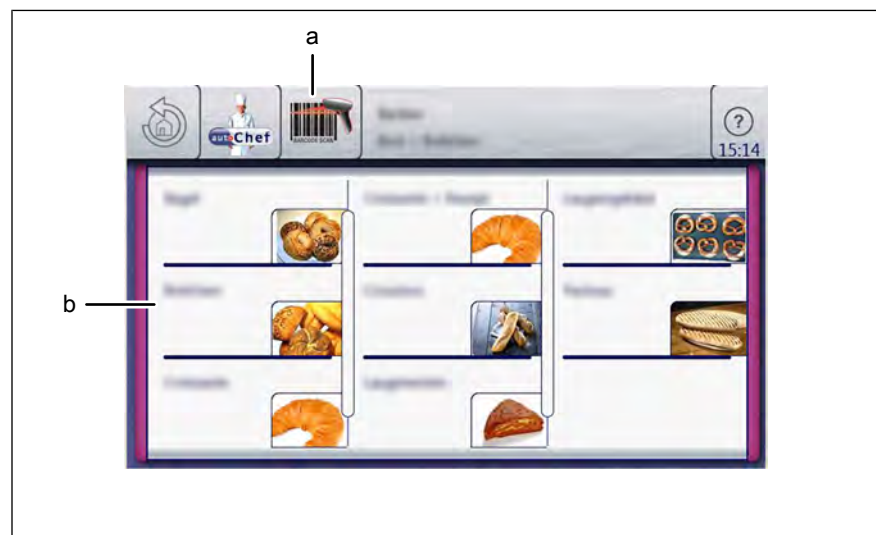


Image: Window for selecting the barcode scanner

a *Barcode scanner* button

b *Product* field

**Requirements** Barcode scanner connected  
*Manual cooking* field selected

1. Tap the "Barcode scanner" button.
  2. Read the barcode.
    - ↳ A search for the product commences.
    - ↳ The cooking program is loaded.
- ↳ The *Barcode Scanner* function is utilized.

### 6.6.20 Preparing a USB stick for importing and exporting

**Prerequisite** USB stick is formatted  
USB stick not write-protected

1. Create a folder structure for importing and exporting.

2. Create a folder named "autoCheflmages".
    - ↳ Data exchange of photos in PNG format, resolution of 95x69 pixels, maximum resolution 150 KB.
  3. Create a folder named "FCBrowserFiles".
    - ↳ Data exchange of text in HTML format.
  4. Create a folder named "FCImport".
    - ↳ Data exchange from cookbooks.
  5. Create a folder named "MMIContent".
    - ↳ Data exchange of additional imported content.
  6. Create a folder named "MMiUpdate".
    - ↳ Data exchange of update files.
- ↳ Once the folder structure has been completed, the USB flash drive is ready for use.

### 6.6.21 Inserting and removing the USB stick

#### Inserting the USB stick

**Prerequisite** USB stick with a minimum of 2 GB and maximum of 32 GB available storage capacity (not included with delivery)  
 USB stick not write-protected

- Insert the USB flash drive.  
 ↳ The USB stick is ready after at most 20 seconds.

#### Removing the USB stick

**Prerequisite** Exporting or importing of data completed

- Remove the USB stick.

## 6.7 Using the core temperature sensor

### **WARNING**

#### Risk of injury from a bursting core temperature sensor

- The core temperature sensor can burst as the result of overheating of the measuring tip.
- Never heat a core temperature sensor with a cigarette lighter or other heat source.

### **CAUTION**

#### Risk of burns from hot surfaces

- Grasp the core temperature sensor by the handle, remove it from the cooked food and carefully place it into the holder.
- Protect arms and hands by wearing suitable protective gloves.

### INFORMATION

Measuring the core temperature is recommended for all types of cooking to achieve an optimal result.

The unit has a core temperature sensor in the cooking chamber and can be equipped with an optional connection for an external core temperature sensor.

---

### INFORMATION

A core temperature measurement is always possible, if the core temperature sensor is inserted in the food being cooked. Also before or after a cooking process or during a time-controlled cooking step.

---

#### 6.7.1 Measuring with a 4-point core temperature sensor

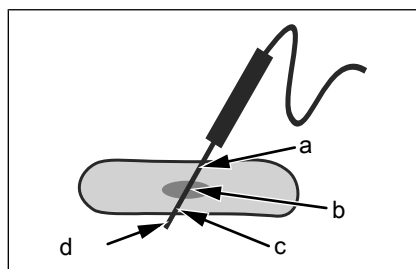


Image: Core temperature sensor with four measuring points

- Insert the core temperature sensor fully into the food to be cooked.
- Insert the core temperature sensor into the thickest section of the food to be cooked.
- When cooking food with a bone, insert the core temperature sensor close to the bone.
- When cooking longer pieces of food, insert the core temperature sensor across the food to avoid a hole in the center of the slice.
- When cooking fowl, insert the core temperature sensor into the inside of the leg.

#### 6.7.2 Measuring the core temperature when cooking frozen food

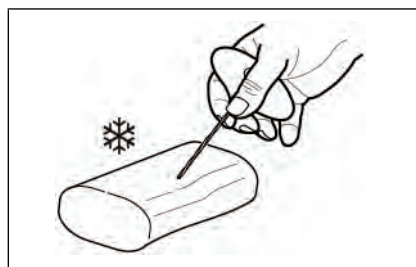
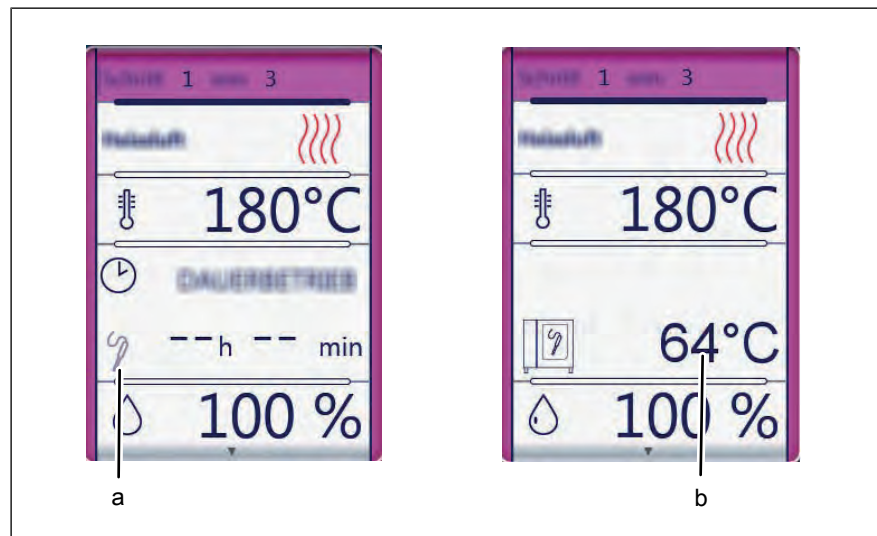


Image: Drilling an insertion duct with a hand drill

1. Use a hand drill to make an insertion duct for inserting the sensor.
2. Place the food to be cooked on the baking sheet or into the cooking pan.
3. Place the cooking sheet or cooking pan into the unit.

4. Insert the core temperature sensor into the food to be cooked.

### 6.7.3 Core temperature display with time-controlled cooking process



a Core temperature button

b Core temperature display

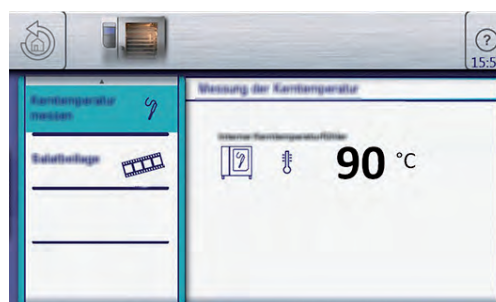
**Prerequisite** Core temperature sensor in the food being cooked  
Time-controlled cooking process is running

1. Tap the *Core temperature* button in the cooking step display.  
↳ The current core temperature is displayed for 5 seconds.

### 6.7.4 Core temperature display outside the cooking process

**Prerequisite** Core temperature sensor in the food being cooked

1. Open the *Unit functions* menu.
2. Tap the "Measure core temperature" button on the second page.



↳ The core temperature is displayed.

## 6.8 Manual cooking

Cooking modes and other functions are available in the Manual cooking mode. Selecting one of the components automatically creates a single-step cooking program.

Settings such as cooking mode, cooking temperature and cooking time are specified, and the cooking step is either started or saved.

### 6.8.1 Opening the Manual cooking menu

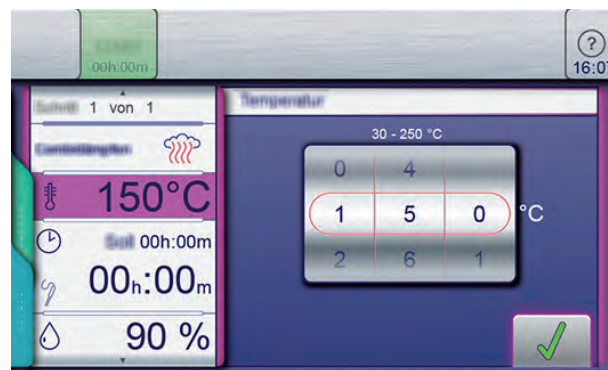
**Prerequisite** Unit is on  
The Main menu is displayed

- Tap the "Manual cooking" button.
- ↳ The *Manual cooking* menu is displayed.

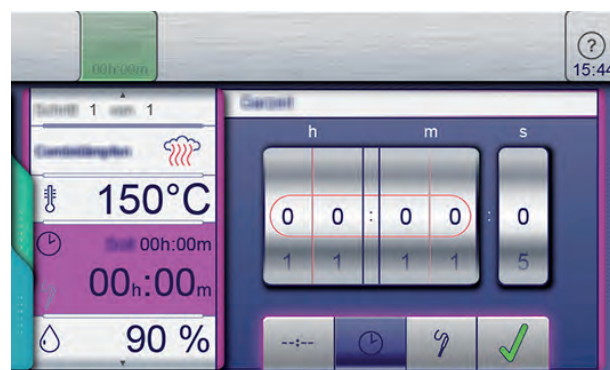
### 6.8.2 Creating a cooking program step

**Prerequisite** Unit is on  
The *Manual cooking* menu is displayed  
Cooking mode selected

1. Tap the *Cooking temperature* field.
- ↳ The *Setting* window is displayed.

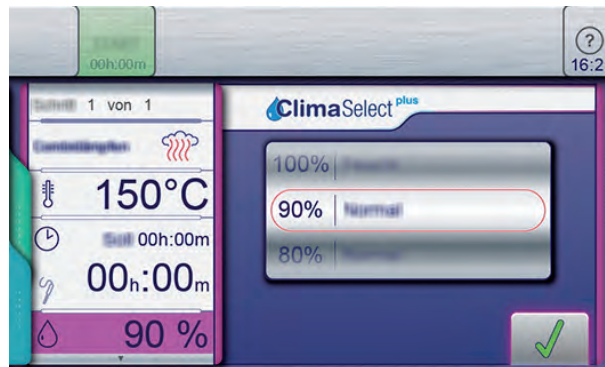


2. Using a swipe gesture, set the rollers to the desired value.
3. Tap the *Confirm* button.
- ↳ The *Setting* window closes.
4. Tap the *Cooking time* field.
- ↳ The *Setting* window is displayed.

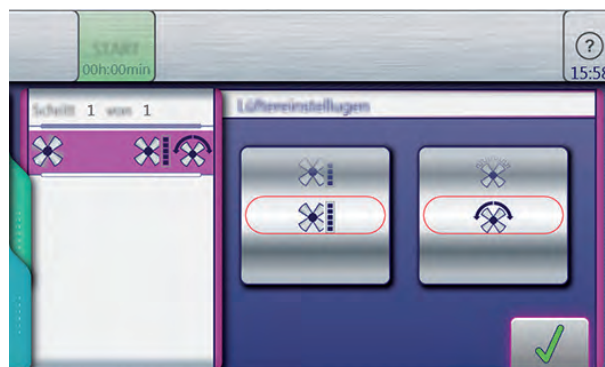




5. Tap the *Continuous operation* button or the *Cooking time* button or the *Core temperature* button.
6. Using a swipe gesture, set the rollers to the desired value.
7. Tap the *Confirm* button.
  - ↳ The *Setting* window closes.
8. Tap cooking chamber humidity.
  - ↳ The *Setting* window is displayed.



9. Using a swipe gesture, set the roller to the desired value.
10. Tap the *Confirm* button.
  - ↳ The *Setting* window closes.
11. Use a swipe gesture to change to the next page and make further settings.
12. Tap the *Fan* field.
  - ↳ The *Setting* window is displayed.



13. Set the fan speed and direction of rotation.
14. Using a swipe gesture, set the rollers to the desired value.
15. Tap the *Confirm* button.
  - ↳ The *Setting* window closes.
- ↳ The cooking program can be started.

### Tip

The cooking mode can also be changed while entering the cooking step.

- Tap the *Cooking mode* field.
    - ⇒ Possible selections appear.
  - Tap the new cooking mode.
    - ⇒ The standard values of the selected cooking mode are displayed.
  - Modify the values.
    - ⇒ Cooking mode for this cooking step is changed.
- 

## 6.9 Creating and managing your own cooking programs

Cooking modes and other functions are available in the *Manual cooking* menu. Using these components, users can create their own programs.

### NOTICE

#### Risk of property damage from data loss

Save your own cooking programs to an external storage device, e.g. a USB stick, regularly.

---

### 6.9.1 Creating a cooking program

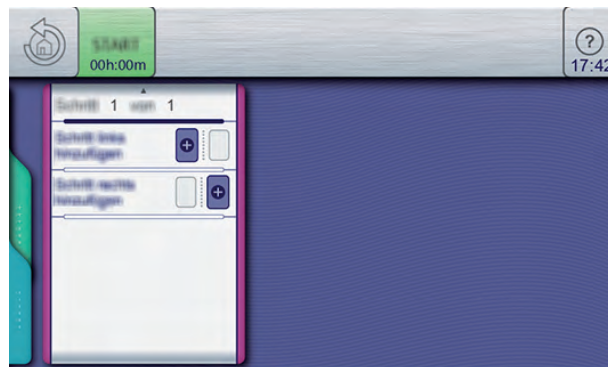
#### Creating a cooking program step

**Prerequisite** *Manual cooking* menu open

1. Tap the field for the desired cooking mode.
  - ↳ The first step of the cooking program is created.
  - ↳ The cooking program step display reads "Step 1 of 1".
2. Modify the desired settings for the first step.
  - ↳ The first step of the cooking program has been created.

#### Adding cooking program steps

3. A swipe gesture upward opens the next page.
  - ↳ The next page is displayed.



4. Tap the field "Add step at the left".
- or
5. the field "Add step at the right".
  - ↳ The "New step" window opens.
6. Select the cooking mode or function in the window by tapping it.
  - ↳ The cooking program step display in the window shows the current position of the new step in the cooking program.
7. Modify the settings for the step.
  - ↳ The new step is added.

### Deleting a cooking program step

## INFORMATION

If a cooking program has only one step, it cannot be deleted. The function is not active.

8. Select the step.
9. A swipe gesture upward opens the next page.
  - ↳ The next page for the step is displayed.
10. Tap the "Delete step" field.
  - ↳ The *Delete* window is displayed.
11. Tap the "Yes" button.
  - ↳ This deletes the step.
  - ↳ The positions of the remaining steps in the cooking program are updated.
  - ↳ The step is deleted.



## 6.9.2 Saving the cooking program

## NOTICE

### Risk of property damage from data loss

Save your own cooking programs to an external storage device, e.g. a USB stick, regularly.

## INFORMATION

Cooking programs that have been created can be saved prior to starting or after completion of the cooking program.

## INFORMATION

To save a cooking program, at least one cooking program name and one category must be specified.

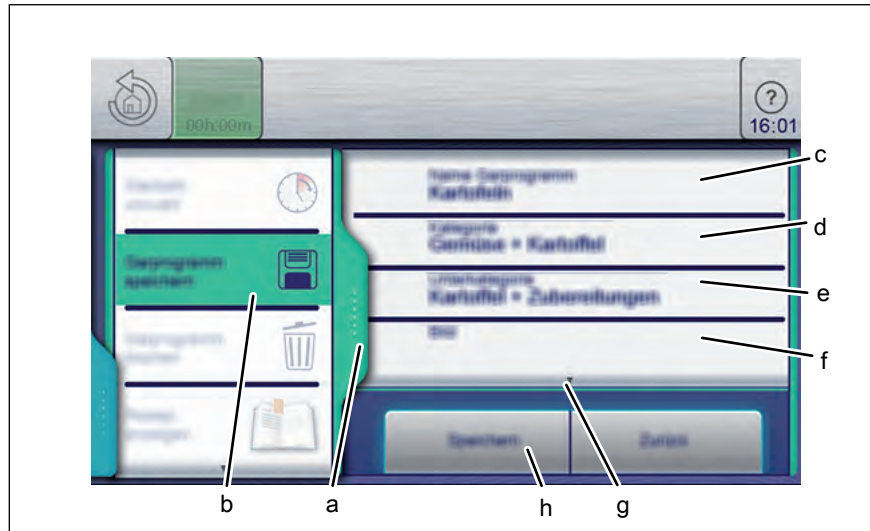


Image: Green tab and cooking program in the Save window

- |   |                              |   |                        |
|---|------------------------------|---|------------------------|
| a | Green tab                    | e | "Subcategory" field    |
| b | "Save cooking program" field | f | "Image" field          |
| c | "Name cooking program" field | g | Next page arrow symbol |
| d | "Category" field             | h | "Save" button          |

**Prerequisite** Cooking program is created and displayed

1. Tap the *green* tab.
  - ↳ The *Tab* window is open.
2. Tap the "Save cooking program" field.
  - ↳ The *Save* window is open.
- ↳ Save after making the entries.

**Saving the cooking program name**

1. Tap the "Name cooking program" field.
  - ↳ The *Keyboard* menu is displayed.
2. Use the keys to enter the desired program name.
3. Tap the *Confirm* button.
  - ↳ The *Keyboard* menu closes.
  - ↳ The program name is displayed in the *Save* window.

**Entering a category**

1. Tap the "Category" field.
  - ↳ The *Automatic cooking (autoChef)* menu is displayed.
2. Tap the field with the desired *Category*.
  - ↳ The category is set.
  - ↳ The *Automatic cooking (autoChef)* menu closes.
  - ↳ The category is displayed in the *Save* window.

**Entering a subcategory (optional)**

1. Tap the "Subcategory" field.
  - ↳ The *Subcategory* menu is displayed.
2. Tap the field with the desired *Subcategory*.
  - ↳ The subcategory is set.
  - ↳ The *Subcategory* menu closes.
  - ↳ The subcategory is displayed in the *Save* window.

**Assigning an image (optional)**

1. Tap the "Image" field.
  - ↳ The *Image* menu is displayed.
2. Select a photo by tapping it.
3. Select the location to save the photo.
4. Tap the "Photos in unit" button or the "Photos on USB stick" button.
  - ↳ The photo is selected.
  - ↳ The *Image* menu closes.
  - ↳ The name of the photo is displayed in the *Save* window.

**Assigning a video (optional)**

1. Tap the "Video" field.
  - ↳ The *Video* menu is displayed.
2. Select the video by tapping it.
3. Select the location to save the photo.
4. Tap the button for "Videos in unit" or "Videos on USB stick".
  - ↳ Video is selected.
  - ↳ The *Video* menu is closed.
  - ↳ The name of the video is displayed in the *Save* window.

**Assigning a recipe (optional)**

1. Tap the "Recipe" field.
  - ↳ The *Recipe* menu is displayed.
2. Tap the "Empty recipe" field.
3. Select the save location.
4. Tap the "Recipes in unit" button or the "Recipes on USB stick" button.
  - ↳ The recipe is set.
  - ↳ The *Recipe* menu closes.
  - ↳ The name of the recipe is displayed in the *Save* window.

**Selecting favorites (optional)**

1. Tap the "Show favorites" field.
  - ↳ The *Show favorites* menu is displayed.

2. Tap the "Yes" button or the "No" button.
  - ↳ Tapping Yes displays the cooking program in the Favorites menu.

### **Selecting characteristics of the food to be cooked (optional)**

1. Tap the "Frozen food" field.
  - ↳ The *Frozen food* menu is displayed.
2. Tap the "Yes" button or the "No" button.
  - ↳ Tapping Yes selects the food to be cooked as a frozen food.

### **Assigning an identification (optional)**

1. Tap the "Identification" field.
    - ↳ The *Identification* menu is displayed.
  2. Use the keyboard to enter the barcode.
- or
3. Read the barcode with the barcode scanner.
    - ↳ Scan the barcode and assign to a cooking program or to food to be cooked.

### **Selecting QualityControl**

1. Tap the "QualityControl" field.
    - ↳ The *QualityControl* menu is displayed.
  2. Tap the "No" button.
    - ↳ QualityControl is deactivated for the cooking program.
  3. Tap the "Yes" button.
    - ↳ Tapping Yes sets the cooking program for a minimal amount of food to be cooked.
- ↳ QualityControl automatically adjusts the cooking time for a larger charge.

### **Selecting SES**

1. Tap the "SES" field.
  2. Tap the "No" button.
    - ↳ SES is deactivated for the cooking program.
  3. Tap the "Yes" button.
    - ↳ Selecting "Yes" automatically activates "SES" shortly before the end of cooking.
- ↳ SES adjusts automatically when using cooking programs with a cooking time of more than 6 minutes.

### **Assigning a video (optional)**

1. Tap the "Video" field.
  - ↳ The *Video* menu is displayed.
2. Select the video by tapping it.

3. Select the location to save the photo.
4. Tap the button for "Videos in unit" or "Videos on USB stick".
  - ↳ Video is selected.
  - ↳ The *Video* menu is closed.
  - ↳ The name of the video is displayed in the Save window.

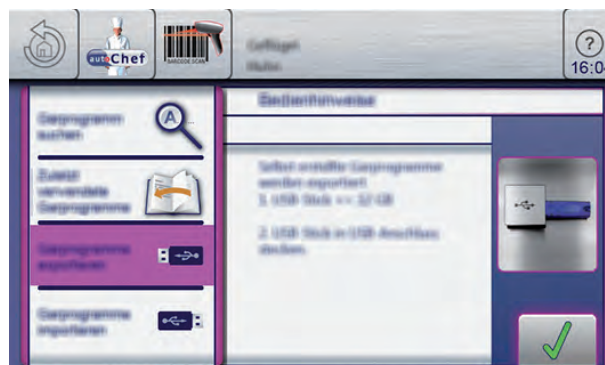
### 6.9.3 Exporting a cooking program

#### INFORMATION

Previously exported cooking programs on the USB stick will be overwritten.

**Prerequisite** Cooking program open  
 Cooking program saved  
 USB stick inserted

1. Tap the *green* tab.
  - ↳ The *Tab* window is open.
2. Tap the "Export cooking programs" field.
  - ↳ The *Operating instructions* window opens.



3. Read the displayed operating instructions.
  4. Tap the *Confirm* button.
    - ↳ The cooking program is exported to the USB stick.
    - ↳ The *Confirm* window is displayed.
  5. Tap the *Confirm* button.
    - ↳ The *green tab* window closes.
- ↳ The cooking program is exported.

### 6.10 Automatic cooking (autoChef)

In the "Automatic cooking" mode, all cooking programs stored in the unit are available. The cooking program is selected in the *Automatic cooking* menu.

### 6.10.1 Opening the Automatic cooking menu

**Prerequisite** Unit is on  
The Main menu is displayed

- Tap the "Automatic cooking" button.
- ↳ The *Automatic cooking (autoChef)* menu is displayed.

### 6.10.2 Finding and opening a cooking program

#### Finding and opening a cooking program by category

Cooking programs can be found in the *Automatic cooking* menu by category and subcategory.

---

## INFORMATION

Arrow symbols in a window always display the next or previous page. A swipe gesture upward or downward opens the corresponding window.

---

**Prerequisite** Unit is on  
Main menu is displayed

1. Tap the "Automatic cooking" button.
    - ↳ The *Automatic cooking* menu is displayed.
  2. Tap the field with the desired Category.
    - ↳ The Subcategory menu is displayed.
  3. Tap the field with the desired subcategory.
    - ↳ The Recipe menu with all recipes in the subcategory is displayed.
  4. Tap the field with the desired recipe.
    - ↳ The cooking program is selected and being loaded.
    - ↳ The cooking program steps are displayed.
- ↳ The cooking program is open.

#### Finding and opening a cooking program in the cookbook

All cooking programs are saved in the cookbook in alphabetical order.

**Prerequisite** Unit is on  
Main menu is displayed

1. Tap the "Automatic cooking" button.
  - ↳ The Category menu is displayed.
2. Tap the "autoChef" button in the information strip.
  - ↳ The *autoChef* window is displayed.





3. Tap the *Find cooking program* field.
    - ↳ The *Search* window is displayed.
  4. Using the keyboard, enter the letters for the name to be found.
    - ↳ A filtered list is displayed in the *Result* window.
  5. Tap the field with the name found.
    - ↳ The cooking program is selected and being loaded.
    - ↳ The cooking program steps are displayed.
- ↳ The cooking program is open.

### 6.10.3 Starting the cooking program

#### INFORMATION

The current step in the cooking program is highlighted. Upon completion, the following step automatically appears in the display.

**Prerequisite** Cooking program open

1. Tap the "Start" button in the information strip.
    - ↳ The cooking program starts.
    - ↳ The "Start" button in the information strip changes to the "Stopp" button
    - ↳ The remaining cooking program time is displayed in the "Stopp" button.
- ↳ The cooking program is started.

### 6.10.4 Ending the cooking program

**Prerequisite** Cooking program started  
Cooking program time has not elapsed

1. Tap the "Stopp" button in the information strip.
- or

2. Wait for the cooking time to end.
  - ↳ Cooking program has ended.
  - ↳ The "Stopp" button in the information strip changes to the "Start" button
  - ↳ The cooking program has ended.

---

### INFORMATION

If the cooking chamber door is not opened, the fan continues to run at a low speed at intervals. This achieves even cooking.

---

---

### INFORMATION

If the current cooking process is stopped manually, a window appears under certain circumstances with *Cooking program has been interrupted*.

You then have the opportunity to end or continue the cooking program.

---

## 6.10.5 Modifying the cooking program

---

### INFORMATION

Tabs are available only within cooking programs or the cooking step display. Tapping the tabs provides faster access to their functions.

---

### INFORMATION

The current step in the cooking program is highlighted and can be modified. All settings of a step can be modified.

---

### INFORMATION

After the settings are made, the modified cooking program can be saved. The cooking program is overwritten if a new cooking program name is not specified.

---

#### Modifying a cooking program after the program has started

**Prerequisite** Cooking program started

Cooking program has not elapsed

1. Modify the settings for the current step.
  - ↳ The modifications of the step become active immediately.
  - ↳ The modifications of the step are displayed.
2. Tap the "Continue" field.
  - ↳ The active step is being ended.
  - ↳ The next step is being started.
  - ↳ Steps advance in the *Settings* window.
  - ↳ The cooking program is modified.

### Modifying a cooking program before the program has started

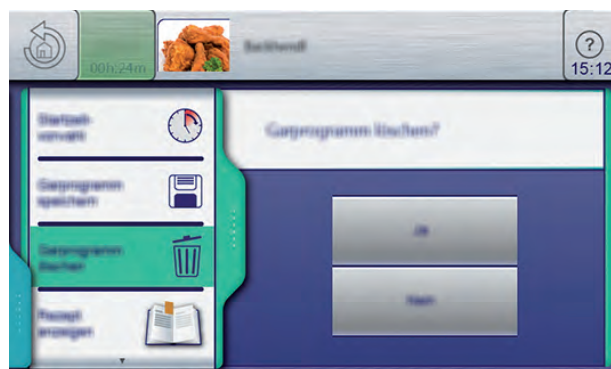
**Prerequisite** Cooking program open  
Cooking program not started

1. Modify various steps.
2. Use a swipe gesture to reach the individual step to be modified.
3. Modify the settings for the step.
  - ↳ The modifications of the step are displayed.
  - ↳ The cooking program can be started without being saved.
  - ↳ If the modifications are to be saved, continue with the next step.
4. Tap the *green* tab.
  - ↳ The *Tab* window is open.
5. Save the cooking program.
  - ↳ All modifications to the cooking program are saved.
  - ↳ The saved cooking program is modified.

### 6.10.6 Deleting a cooking program

**Prerequisite** Cooking program open  
Cooking program not started

1. Tap the *green* tab.
2. The *Tab* window is open.
3. Tap the "Delete cooking program" field.
  - ↳ The *Delete* window is displayed.



4. Tap the "Yes" button.
  - ↳ The cooking program is being deleted.
  - ↳ The *Confirm* window is displayed.
5. Tap the *Confirm* button.
  - ↳ The *green* tab closes.
  - ↳ The cooking program is deleted.

### 6.10.7 Exporting and importing a cooking program

#### Exporting cooking programs

When exporting, all of the user-created cooking programs in the cookbook are exported.

---

## INFORMATION

Previously exported cooking programs on the USB stick will be overwritten.

---

**Prerequisite** USB stick inserted

*Automatic cooking* menu open

User-created cooking programs are saved in the cookbook

1. Tap the "autoChef" button in the information strip.  
↳ The *autoChef* window opens.
2. Tap the "Export cooking programs" field.  
↳ The *Operating instructions* window opens.  
↳ Read the displayed operating instructions.



3. Tap the *Confirm* button.  
↳ All user-created cooking programs are exported to the USB stick from the cookbook.  
↳ The *Confirm* window is displayed.
4. Tap the *Confirm* button.  
↳ The *Confirm* window closes.  
↳ The cooking programs are exported.

#### Import cooking programs

When importing, the new cooking programs are added to the cookbook.

---

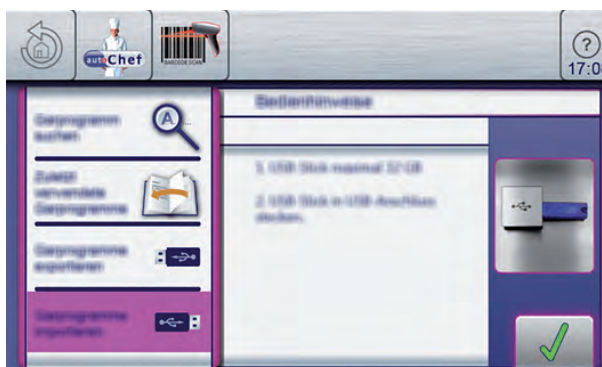
## INFORMATION

Existing cooking programs can be overwritten or the file names of the imported cooking programs can have a supplement added.

---

**Prerequisite** USB stick inserted  
Automatic cooking menu open.

1. Tap the "autoChef" button in the information strip.  
↳ The *autoChef* window opens.
2. Tap the "Import cooking programs" field.  
↳ The *Operating instructions* window opens.  
↳ Read the displayed operating instructions.



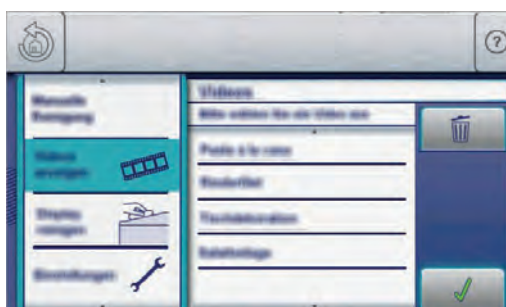
3. Tap the *Confirm* button.  
↳ All cooking programs on the USB stick are imported to the cookbook.  
↳ The *Operating instruction* window is displayed.
4. Tap the "OK" button.  
↳ The cooking programs are imported.

## 6.11 VideoAssist

### 6.11.1 Watching a video

**Prerequisite** Videos saved on the unit.

1. Open the *Unit functions* menu.
2. Open the *Display videos* menu.



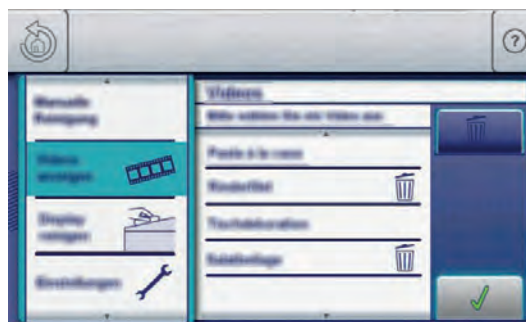
3. Select the video by tapping it.

4. Tap the *Confirm* button.  
↳ The video is played.

### 6.11.2 Deleting a video

**Prerequisite** The *Display videos* menu is open.

1. Tap the field *Delete* .  
↳ The *Delete* field becomes dark.
2. Tap the videos to be deleted.  
↳ The *Delete* symbol appears behind the designation of the video.  
↳ If you tap again on the video, the selection deletes this video.



3. Touch the *Confirmation* field.  
↳ The marked videos are deleted.

### 6.12 Pausing and ending operation

Switch off the unit during pauses and at end of operation.

#### **Period of idleness last more than 2 days**

**Prerequisite** GN containers, baking sheets and grates removed from the cooking chamber

No food to be cooked in the cooking chamber

1. Operate the hand shower for 1 minute.
2. Run the "Steaming" cooking mode for 7 minutes at 100 °C (212 °F).

#### **Period of idleness lasting more than 7 days**

**Prerequisite** GN containers, baking sheets and grates removed from the cooking chamber

No food to be cooked in the cooking chamber

1. Operate the hand shower for 5 minutes.
2. Run the "Steaming" cooking mode for 1 hour at 100 °C (212 °F).

## 7 Cleaning and caring for the unit

### ⚠ CAUTION

#### Risk of burns from hot surfaces

- Allow surfaces to cool prior to cleaning.

### ⚠ CAUTION

#### Risk of chemical burns from cleaning agent

- Follow the instructions of the cleaning agent manufacturer.
- Take appropriate protective measures when handling aggressive cleaning agents.

### NOTICE

#### Risk of property damage from extremely abrupt cooling

- Do not shock the unit by cooling it abruptly.

### NOTICE

#### Risk of property damage from improper cleaning

- Do not clean the unit with a high-pressure cleaner or water jet.

### 7.1 Preventing corrosion

- Keep the surfaces of the unit clean, with access to air.
- Remove lime, grease, starch and protein deposits from the unit's surfaces.
- Remove salt accumulations.
- Expose parts made from non-rusting steel only briefly to contact with highly acidic foods, spices, salts or the like.
- Avoid damaging the stainless steel surface with other metal items, for instance, steel spatulas or steel wire brushes.
- Prevent contact with iron and steel, for instance, steel wool and steel spatulas.
- Do not use bleaching or chlorine-containing cleaning agents.
- Clean contact surfaces with water.

### 7.2 Removing rust spots

- Remove fresh rust spots with a mild abrasive or fine sandpaper.
- Always remove rust spots completely.
- Expose treated areas to fresh air for at least 24 hours. During this time, do not allow any contact with greases, oils or foods so that a new protective layer can form.

### 7.3 Cleaning the housing

**Prerequisite** Unit switched off and cooled down

→ Clean the housing with warm water and a commercially available detergent.

### 7.4 Cleaning the handle, operating elements and operating panel membrane

#### NOTICE

#### Risk of property damage from improper cleaning

- Do not clean the surface with highly abrasive or chemically aggressive cleaning agents.
- Do not clean the surface with highly abrasive sponges.

**Prerequisite** Unit dead

→ Clean the door handle, operating elements and control panel with a damp cloth and commercially available detergent.

### 7.5 Cleaning the touchscreen

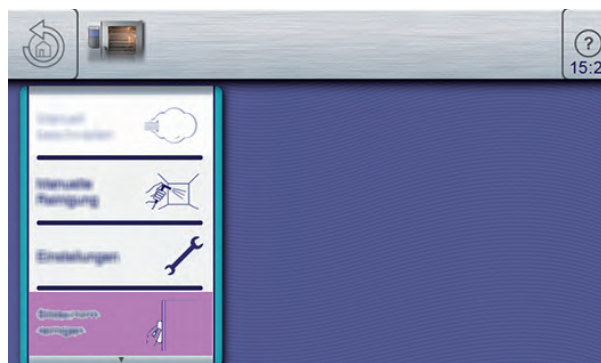
#### NOTICE

#### Risk of property damage from improper cleaning

- Do not clean the touchscreen with highly abrasive or chemically aggressive cleaning agents.
- Do not clean the touchscreen with highly abrasive sponges.

#### INFORMATION

A cleaning time of 20 seconds is provided. During this time, the touchscreen cannot be operated.





**Prerequisite** Unit function menu displayed

1. Tap the "Clean touchscreen" field.
    - ↳ The touchscreen no longer reacts when touched.
    - ↳ The *Clean* window opens.
    - ↳ The cleaning time is updated.
  2. Clean the touchscreen within 20 seconds.
    - ↳ The Clean window closes.
    - ↳ The Unit function menu is displayed.
- ↳ The touchscreen is clean.

## 7.6 Cleaning the door seal

### NOTICE

#### Risk of property damage from improper cleaning

Animal fats in combination with high temperatures can damage the door seal very quickly if it is not maintained properly.

- Clean the door seal regularly.
- Do not use aggressive cleaners.

### INFORMATION

During automatic cleaning and semi-automatic cleaning, the outside surface of the door seal is not cleaned.

The door seal must be cleaned separately.

### INFORMATION

If the unit is used primarily for roasting, also clean the door seal during pauses in use.

→ When finished using the unit, clean the door seal with warm water and a commercially available detergent.

## 7.7 Cleaning the cooking chamber door

### ⚠ CAUTION

#### Risk of burns from hot surfaces

- Allow surfaces to cool prior to cleaning.

### NOTICE

#### Risk of property damage from improper cleaning

- Do not clean the surface with highly abrasive or chemically aggressive cleaning agents.
- Do not clean the surface with highly abrasive sponges.

### NOTICE

#### Risk of property damage from improper cleaning of the surface

- Do not use abrasive cleaners or cloths.
- Do not use grill cleaners.

→ Remove residual calcium deposits from the glass window with vinegar or citric acid.

## 7.8 Cleaning the steam outlet

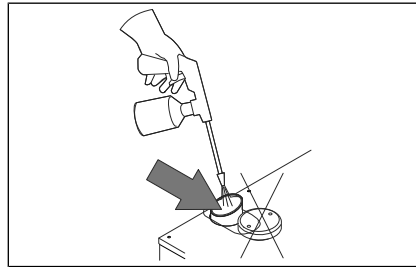


Image: Cleaning the steam outlet

### NOTICE

#### Risk of property damage from deposits

- Inspect the steam outlet nozzle and connected piping for deposits.

### INFORMATION

Use a liquid cleaner containing at most 20% sodium or potassium hydroxide.

Rinsing with water is not necessary.

1. Examine the steam outlet nozzle and connected piping for deposits.
2. Spray liquid cleaner into the steam outlet nozzle.

## 7.9 Cleaning the condensation hood (optional)

### ⚠ CAUTION

#### Risk of fire from dirt and grease accumulation

- Clean the hood after use.
- Follow the cleaning instructions.

### ⚠ CAUTION

#### Risk of burns from hot surfaces

- Allow surfaces to cool prior to cleaning.

### ⚠ CAUTION

#### Risk of injury from sharp edges

- Wear protective gloves.

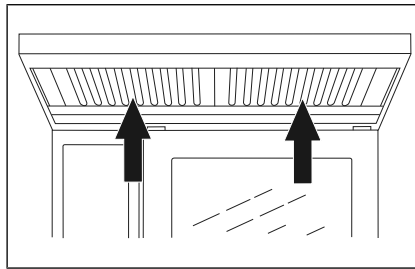


Image: Cleaning the condensation hood

**Prerequisite** Unit and hood disconnected from the electric supply mains  
Unit and hood cool

1. Clean the housing daily with warm water and a commercially available cleaner.
2. Push the grease filter upwards.
3. Pull the grease filter on the underside of the hood forward to remove it.
4. Clean the grease filter and hood with a commercially available cleaning agent.
5. Rinse and dry the grease filter, and replace it in the hood.

## 7.10 Removing calcium deposits from the unit

### INFORMATION

To remove calcium deposits manually, fill a manual spray gun with a special decalcifier.

**Prerequisite** Cooking chamber temperature less than 40 °C (104 °F)  
Cooking chamber cleaned

1. Dilute special decalcifier with water in a ratio of 1:2.
2. Open the air diverter.
3. Spray the diluted special decalcifier into the cooking chamber.
4. Allow to act for 30 minutes.
5. Rinse the cooking chamber thoroughly.
6. Examine the cooking chamber for any remaining calcium deposits.
7. If necessary, repeat the decalcification.
8. Open the cooking chamber door and leave it ajar until the unit is used again.
  - ↳ This extends the service life of the door seal.
  - ↳ No moisture builds up in the cooking chamber.

## 7.11 Cleaning the cooking chamber automatically with WaveClean

### ⚠ CAUTION

#### Risk of chemical burns

Keep the cooking chamber door closed during the cleaning cycle.

**⚠ CAUTION**

**Risk of chemical burns**

Place the preheat bridge on the lower edge of the cooking chamber opening on models FPG-215 and FPG-221 when there is no tray trolley in the combisteamer.

---

**INFORMATION**

**Note regarding cleaning agents**

The use of unsuitable cleaning agents normally will damage the units. HennyPenny has made a great effort to offer a cleaning agent that provides exceptional cleaning but does not attack or damage the hot air steamer. We thus recommend that only our own cleaning agent be used. HennyPenny assumes no responsibility or liability for damage caused by unsuitable cleaning agents. Claims against HennyPenny that are due to this can not be upheld, not even within the scope of the guarantee or warranty.

---

**INFORMATION**

Cooling the temperature sensor in order to start the cleaning process sooner is not allowed. The whole cooking chamber must be cooled down to 60 °C (140 °F) for effective cleaning.

---

**INFORMATION**

Depending on the cleaning level selected, the fan may be idle for up to 60 minutes. This does not mean that cleaning has been interrupted; it is a normal part of the cleaning program.

---

**INFORMATION**

**Forced rinse**

Automatic forced rinse is triggered in the following situations.

- Cleaning is canceled manually. Canceling within the first 10 minutes of cleaning does not trigger an automatic forced rinse.
  - Cleaning is canceled automatically in the event of a fault.
  - The combisteamer is switched off and then back on during cleaning. An automatic forced rinse begins when the unit is switched back on.
- 

**INFORMATION**

If the automatic forced rinse is canceled, it starts again from the beginning.

It is not possible to start a cooking program before the forced rinse run to completion.

---

### 7.11.1 Preparing for cleaning

#### NOTICE

#### Risk of property damage from improper cleaning

- Do not clean the unit with a high-pressure cleaner or water jet.

**Prerequisite** GN containers, baking sheets and grates removed from the cooking chamber

1. Remove any food remains from the cooking chamber.
  - ↳ The drainage sieve is not obstructed.
2. Leave only the hang-in frame in the cooking chamber in tabletop units and the tray trolley in the cooking zone in pedestal units.
3. Close the cooking chamber door.

### 7.11.2 Selecting the cleaning level

#### INFORMATION

If the water pressure drops during cleaning, the cleaning program switches to a standby mode. Once the water pressure is restored, the cleaning program resumes automatically.

#### INFORMATION

Despite different cleaning durations, all cleaning steps require the same amount of water.

#### Tip

For automatic cleaning overnight, we recommend the cleaning levels "normal" or "extra". This ensures adequate drying.

**Prerequisite** Unit is on  
Main menu is displayed

1. Tap Unit function.
2. Tap the *WaveClean* symbol.
3. Selecting the cleaning level.
  - ↳ The *Operating instruction* window is displayed.
4. Tap the *Confirm* button.
  - ↳ The *Select cleaning level* window is displayed.
5. Tap the "Start Stopp" button.
  - ↳ If necessary, the cooking chamber is cooled down until the cleaning temperature of 60 °C (140 °F) is reached.

### 7.11.3 Inserting the cleaning cartridge

---

#### INFORMATION

Use only cleaning cartridges with an undamaged wax seal.

If the wax seal is damaged, the cleaner can enter the cleaning circuit prematurely or not dissolve completely, so that complete cleaning is no longer assured.

Insert the cleaning cartridges only when requested to do so.

---

#### INFORMATION

Never operate the unit in the automatic cleaning mode without a cleaning cartridge.

In the event of severe soiling, select the "extra" cleaning level and use 2 cleaning cartridges.

---

#### INFORMATION

Cartridge holders are located on the air diverter, the tray trolley and the pre-heat bridge.

---

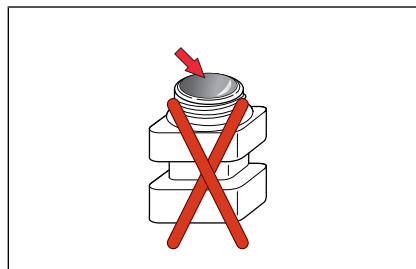


Image: Wax seal on the cleaning cartridge damaged

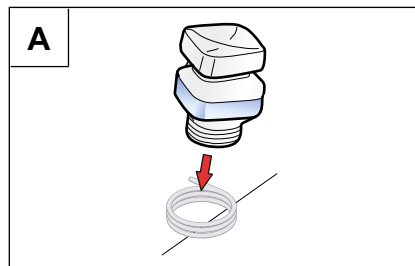
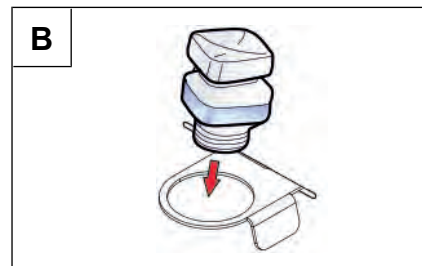


Image: A: Insert cartridge into spring holder; B: Insert cartridge into holder



**Prerequisite** Cleaning cartridge sealed and undamaged

1. Open the cooking chamber door.
2. Open the lid of the cleaning cartridge.
3. Place the cleaning cartridge in the holder on the air diverter.
4. Close the cooking chamber door.

### 7.11.4 Starting automatic cleaning

- Requirements**
- Water connection is open
  - The unit is on
  - Cleaning level selected
  - Cleaning cartridge inserted
  - Cooking zone temperature at 60 °C (140 °F)
- Tap the "START STOPP" button.
- ↳ The display shows the remaining time.

### 7.11.5 Canceling automatic cleaning

1. Tap the "Stopp" button.
  - ↳ Automatic cleaning is canceled.
  - ↳ Automatic rinsing starts and cannot be canceled.
  - ↳ Upon completion, a prompt appears to remove the cleaning cartridge.
2. Remove the cleaning cartridge.

### 7.11.6 Ending automatic cleaning

#### CAUTION

#### Risk of chemical burns

Dripping liquid can contain chemically aggressive components; it is thus necessary to take appropriate protective measures.

**Prerequisite** Automatic rinsing has stopped after the cleaning program was cancelled or the cleaning time has elapsed

1. Open cooking chamber door.
2. Remove the empty cleaning cartridge.
3. Use the hand shower to thoroughly rinse away any remaining cleaner or rinse aid.
4. Close the cooking chamber door.
  - ↳ After the cooking chamber door is closed, the cleaning program is completed.
5. Use a gentle stream of water to flush away any drops of cleaning water that have collected on the floor in front of the unit.
6. Open the cooking chamber door and leave it ajar until the unit is used again.
  - ↳ This extends the service life of the door seal.
  - ↳ No moisture builds up in the cooking chamber.

### 7.12 Cleaning the cooking chamber manually

#### 7.12.1 Preparing the cooking chamber

#### NOTICE

##### Risk of property damage from improper cleaning

- Do not clean the unit with a high-pressure cleaner or water jet.

**Prerequisite** GN containers, baking sheets and grates removed from the cooking chamber

1. Remove any food remains from the cooking chamber.  
↳ The drainage sieve is not obstructed.
2. Leave only the hang-in frame in the cooking chamber in tabletop units and the tray trolley in the cooking zone in pedestal units.
3. Close the cooking chamber door.

#### 7.12.2 Starting the cleaning program

**Prerequisite** Unit is on

→ Tap Manual cleaning.

#### 7.12.3 Spraying the cleaner

#### ⚠ CAUTION

##### Dangerous situation

Failure to observe precautions can result in slight to moderately severe injuries.

- Wear protective clothing.
- Wear breathing protection.

#### NOTICE

##### Risk of property damage from exceeding the recommended acting time of the cleaner

- Do not allow the cleaner to act longer than specified by the program.

1. The menu field displays the instruction "Spray cleaner"
2. Put on protective clothing, safety goggles and protective gloves
3. Open cooking chamber door.
4. Spray the cooking chamber, heat register and fan wheel with cleaner.

#### 7.12.4 Allowing the cleaner to act

→ Close the cooking chamber door.

↳ The acting time starts.

↳ The display shows the remaining time until the "Flush cooking chamber" stage.



### 7.12.5 Starting cleaning

- The acting time has elapsed, the cleaning process starts automatically.
- ↳ The cooking chamber is heated.
- ↳ The display shows the remaining time.

### 7.12.6 Rinsing the cooking chamber

**Prerequisite** The cleaning process has completed

1. Open cooking chamber door.
2. Using the hand shower, thoroughly rinse through the openings in the air diverter.
3. Thoroughly rinse the cooking chamber with the hand shower for 3 minutes.
4. Close the cooking chamber door.

### 7.12.7 Drying the cooking chamber

**Prerequisite** Cooking chamber door closed

1. The drying process starts automatically.

---

## INFORMATION

The cooking chamber is heated.

2. After the end of the drying process, a signal sounds.
  - ↳ "End" appears on the display.
3. Open the cooking chamber door and leave it ajar until the unit is used again.
  - ↳ This extends the service life of the door seal.
  - ↳ No moisture builds up in the cooking chamber.

## 7.13 Swinging the air diverter open and closed

### CAUTION

#### Pinch hazard from rotating fan

- Before working on the unit, ensure that the unit has been disconnected from the power supply.
  - Do not operate the unit without the air diverter.
-

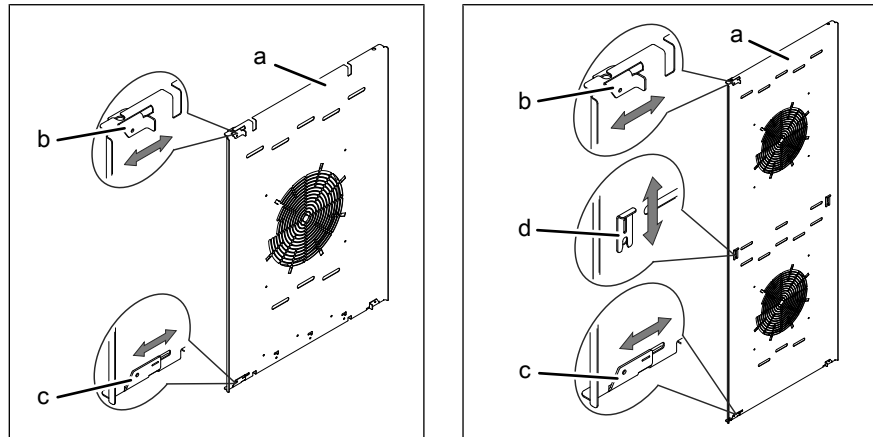


Image: Air diverter fasteners on countertop and pedestal units

a Air diverter  
b Upper fastener

c Lower fastener  
d Center fastener

### Opening the air diverter

**Prerequisite** Unit switched off

1. Remove the left support rack; present only in size 6 and size 10.
2. Loosen the upper fastener.
3. Loosen the lower fastener.
4. Loosen the center fastener; present only in size 20.
5. Swing the air diverter toward the back wall.

### Swinging back the air diverter

1. Swing back the air diverter along the side wall.
2. Close the upper fastener.
3. Close the lower fastener.
4. Close the center fastener; present only in size 20.
5. Check the fasteners.
6. Insert the left support rack; present only in size 6 and size 10.

## 7.14 Inspecting the unit

### 7.14.1 Performing a visual inspection

#### NOTICE

#### Risk of property damage from improper inspection

- Inspect in accordance with the inspection intervals.
- Have inspections performed by a capable user.
- In the event of damage or signs of wear, contact customer service immediately and stop using the unit.

**Prerequisite** Unit disconnected from the electric supply mains  
 Unit empty and cleaned  
 Cooking chamber door opened completely

→ Inspect housing, cooking chamber door and cooking chamber yearly for deformation and damage.

↳ Visual inspection has been performed.

### 7.14.2 Running CombiDoctor (self-diagnostic program)

#### INFORMATION

Incorrect results are displayed when the unit is warm. Allow the unit to cool down.

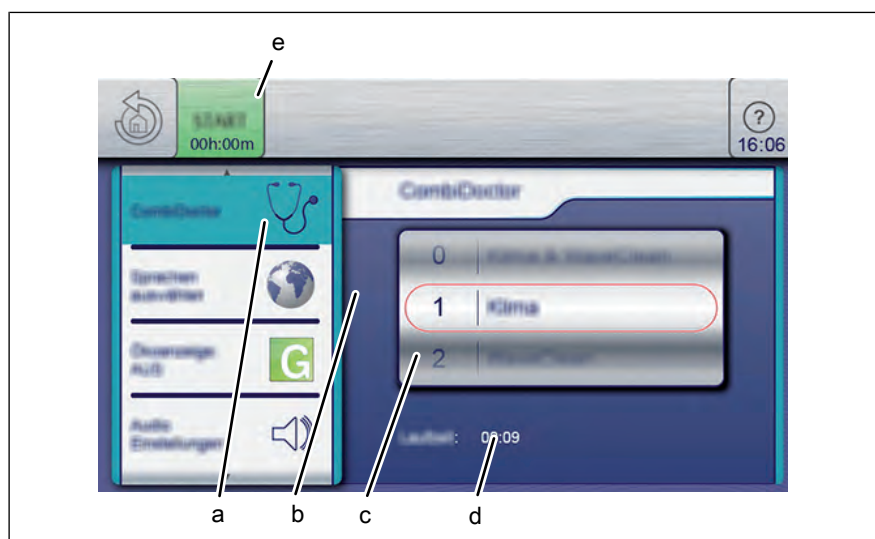


Image: Select the self-diagnostic program setting

- |                     |                  |
|---------------------|------------------|
| a CombiDoctor field | d Remaining time |
| b Setting window    | e "Start" button |
| c Roller            |                  |

**Prerequisite** Water connection is opened  
 Power optimization system deactivated (optional)  
 Cooking chamber empty, no grates and no containers, with hang-in frame or tray trolley  
 Unit is on  
 No errors displayed  
 Unit functions displayed

1. Open the *Settings* menu.
2. Enter the password.
3. Tap the "CombiDoctor" field.
4. Using a swipe gesture, set the roller to the desired self-diagnostic program.

↳ The set self-diagnostic program displays the elapsed time.

5. Press the "Start" button.
    - ↳ A help text is displayed.
  6. Open the cooking chamber door briefly and then close it.
    - ↳ The self-diagnostic program continues automatically.
- ↳ On completion of self-diagnosis, the result is displayed. Note any error message and forward it to your local customer service.

## 8 Troubleshooting

### 8.1 Emergency operation

#### **INFORMATION**

Emergency programs handle the limited further operation of the appliance until servicing. Deviating cooking results and temperature deviations are possible.

In order to allow limited use in case of error, the unit has several different emergency programs. Emergency operation is activated automatically and displayed. After elimination of the error indicated, the controls switch back into normal operation automatically. A reset is not necessary.

### 8.2 Cause of error and remedy

If an error occurs during operation, the error group and the error number within the group are displayed.

### 8.3 Nameplate

When contacting customer service, please always provide the following data from the nameplate:

Serial number (SN)	
Type number (TYP)	

## 9 Disposing of unit in an environmentally responsible manner

The unit has been designed to provide a lifetime of 10 years with average use.

Do not dispose of unit or the unit's components together with non-recyclable waste. If the unit is disposed of together with non-recyclable waste or treated improperly, toxic substances contained in the unit can damage health and pollute the environment.

Dispose of the unit in accordance with local regulations for used appliances. Clarify any open questions with the responsible agencies (for instance, solid waste management).

**Unit** In addition to valuable materials, used electrical and electronic equipment also contains harmful substances that were needed for their operation and safety.

**Cleaning agents** Dispose of leftover cleaning agents and cleaning agent containers in accordance with the information provided by the cleaning agent's manufacturer. Observe applicable regional regulations.

<b>A</b>		<b>L</b>	
Automatic cooking (autoChef)		Low-temperature cooking .....	20
Deleting a cooking program .....	83	<b>M</b>	
Exporting and importing a cooking program ..	84	Main menu .....	23, 37
Finding and opening a cooking program ..	80	Manual cooking .....	71
Importing a cooking program .....	84	Creating a cooling program step .....	72
Modifying the cooking program .....	82	Creating and saving a cooking program ...	74
Automatic forced rinse .....	92	Exporting a cooking program .....	79
<b>C</b>		<b>P</b>	
Changing basic settings .....	38	PerfectHOLD .....	20
ChefsHelp .....	21	<b>Q</b>	
Cleaning		QualityControl .....	22
Automatic cleaning (WaveClean) .....	93	<b>R</b>	
Cleaning cartridge (WaveClean) .....	94	RackControl .....	21
Manual cleaning .....	96	Ready2Cook .....	21
Opening the air diverter .....	98	Recipes	
Swinging back the air diverter .....	98	Import recipes .....	47
ClimaSelect plus .....	22	Regeneration .....	20
Combisteaming .....	19	Retrieving unit information .....	40
Continue cooking .....	22	<b>S</b>	
Core temperature		Self-diagnosis (CombiDoctor) .....	99
Core temperature measurement .....	23	SES .....	21
Core temperature measurement		Setting favorites .....	41
4-point core temperature sensor		Setting the cooking time .....	49
measurement .....	70	Setting the fan .....	52
Setting the core temperature .....	51	Settings	
Standard setting value .....	29	Setting the date and time .....	40
<b>D</b>		Start time selection .....	21
Delta-T cooking .....	20	Steaming .....	19
<b>F</b>		Manual .....	22
FamilyMix .....	22	<b>T</b>	
FlexiRack .....	21	Temperature	
<b>H</b>		Setting the cooking temperature .....	48
HACCP .....	53	Standard setting .....	30
Hot air .....	19	Time2Serve .....	22
<b>I</b>		<b>V</b>	
Idle time .....	22	Video	
Images		Delete video .....	86
Importing images .....	46	Import video .....	46
Inhibit operation .....	42		













Henny Penny Corporation  
P.O.Box 60  
Eaton, OH 45320  
USA

Phone +1 937 456-8400  
Fax +1 937 456-8402

Toll free in USA  
Phone +1 937 417-8417  
Fax +1 937 417-8434

